

**Laundrycare** solutions that inspire and impress

**impress**





# Welcome to Miele

## IMMER BESSER (forever better) – our pledge

When our two great grandfathers were in the process of founding the Miele company, they had to make sure they stood apart from the competition in order to be successful. There are effectively only two ways of doing this: either by being cheaper than the rest or by being better than the rest.

It is not really possible to be both at the same time.

They decided to be “better“ than the rest.

Numerous best in class awards and certificates attest to the fact that Miele has continued to renew its commitment to being “immer besser“ throughout the past 115 years. However, the millions of satisfied customers around the world are perhaps the most important endorsement.

At the heart of this success lies a continuity of values and goals which are typically only found in companies which have been family-run for generations, rather than in businesses which are guided by the often short-term interests of the stock market.

It is in this sense that Miele has embodied first-class product quality and German engineering since 1899. Miele also stands in equal measure for respect, fairness and mutual esteem towards sales partners, customers, suppliers, employees and neighbours. Buying a Miele is an environmentally friendly decision. We ensure this by using methods of production that save resources as well by producing products which set new standards in terms of their consumption of electricity, water and detergent – and save you money at the same time.\*

As directors and co-proprietors of the fourth generation of our business we promise you that this will not change.



Dr. Markus Miele



Dr. Reinhard Zinkann

# IMMER BESSER

## Our brand promise



### **There are many good reasons for choosing Miele.**

Here are just six of them.

Since the company was founded in 1899, Miele has remained true to its 'Immer Besser' brand promise. This means that we will do all that we can to be 'forever better' than our competitors and 'forever better' than we already are. For our customers this means the peace of mind of knowing that choosing Miele is a good decision – and probably the decision of a lifetime!



### **The Miele brand**

In many countries, Miele is the most desired brand in its field. In its German home market, Miele was even voted 'best brand ever' in 2013 across all product branches. And the ownership of products from such a brand reveals much about its users: Miele customers have high expectations for the performance, convenience, design and the environmental friendliness of their domestic appliances. People who buy Miele are quality conscious and have style!



### **Miele quality**

For more than 100 years it has been a proven adage that you can trust Miele and rely on our appliances. We are the only manufacturer in our branch of industry to test products such as our washing machines, tumble dryers, dishwashers and ovens to the equivalent of 20 years of use. Once a Miele, always a Miele: Miele customers around the world remain loyal to Miele and recommend Miele to others. Looking to the future, we promise not to entertain any compromises when it comes to quality and durability!



### **Miele technology**

Miele stands for excellent results combined with the lowest possible energy consumption. This goes for the hygienic and gentle care of your laundry, your flooring and your crockery as well as when conjuring up exquisite culinary delights. The key to this is a wealth of innovative features available only from Miele. This is borne out by numerous first places in leading product tests conducted around the world.



### **Miele convenience**

Whether conventional rotary switch, discreet sensor controls or a high-resolution touch display like the one on your smartphone: operating a Miele is both easy and fun. Add to this a multitude of convenient and reliable automatic programmes and a great love of detail - success is guaranteed - on board both laundry and kitchen appliances. Make life easier for yourself with Miele!



### **Miele design**

Miele believes in clean lines and timeless elegance. Nowhere else will you find such a comparable range of built-in kitchen appliances, with consistency in Design lines and colour options, to suit the most diverse of interior designs and kitchen furniture fronts. Great care is taken to coordinate appliance design across the range. Whatever the style of your kitchen: Miele is the perfect match.



### **Miele service**

Miele customers enjoy preferential treatment: thanks to our fast and efficient after-sales service operation which has been voted best in its branch of industry many times over. Even if you need personalised instructions on appliance use or professional cleaning of your machines, Miele will gladly make a home visit. We will always be there for you. That's a promise!





# Running a tradition of quality

Miele has been a family-owned and family-run company since its inception in 1899. Managed today by the fourth generation, the company has been a pioneer in the field of premium home appliances ever since a butter churn inspired the design of its first ever washing machine in 1901. The butter churn has become Miele's icon, the epitome of the company's ongoing effort to make home living better.

Today, our research and development teams continue to pioneer the way in technological advancements to develop firsts in durability and design.

Our testing procedures are stringent, ensuring every individual part is inspected. Nothing but the highest quality appliance reaches the homes of our customers.

Miele's dedication to quality has won the hearts of consumers the world over. We have grown over the years, and today Miele has a workforce of more than 17,000 employees around the world.

Miele will continue to win the trust of consumers, seeking ways to improve your life. It will always be Forever Better.



reddot design award  
winner 2013



Selected for more than ten years, Europe top 5 most trusted brands:













# Contents

## Introduction

Miele laundry care system	10
Model types	12
Installation options	14
Miele design	16
Efficiency and sustainability	18

## The new design lines **W1** and **T1**

W1 washing machine key features	22
Washing machine benefits	34
Special purpose programmes - washing machines	36
Product overview	40
Further information	44

T1 tumble dryer key features	56
Tumble dryer benefits	66
Special purpose programmes - tumble dryers	68
Product overview	70

Accessories for laundry care appliances	76
---	----

<b>Washer dryer</b>	80
---------------------	----

<b>CareCollection</b>	88
-----------------------	----

<b>Steam ironing system</b>	96
-----------------------------	----

<b>Rotary ironer</b>	104
----------------------	-----

<b>Professional laundry care</b>	112
----------------------------------	-----

<b>Miele Professional</b>	122
---------------------------	-----

This is only available from Miele

## Perfect systematic laundry care

Our laundry-care system covers the entire process, from washing and drying to ironing.



### The ideal combination

Miele washing machines and dryers are coordinated perfectly. As a result, you can find a matching dryer for every washing machine with respect to design and features. We therefore provide you with the best cleaning and care performance with optimum gentle care of your textiles.

### Perfect laundry finish

Many textiles only get a perfect finish when they are ironed and given additional protection through mechanical and thermal treatment. You can iron particularly easily, conveniently, quickly and effectively using the Miele FashionMaster steam iron system and Miele rotary ironers.





### **Simply perfect results**

Not every off-the-shelf detergent cleans just as well in every washing machine. For this reason, we have developed the Miele CareCollection in our own laboratories in collaboration with selected suppliers. The formulas are perfectly adapted to Miele washing machines. As a result, you always get maximum performance with minimum dispensing quantities and help conserve the environment at the same time.





# Overview of model types

## Washing machine and tumble dryer model types available to you

### Miele washing machine models



#### Front-loading washing machines

These washing machines are particularly convenient to load, unload and operate at the front. Thanks to the many different installation options (stacked, built-under, etc.), these appliances can be positioned in most spaces.



#### Washer-dryers

This appliance combines a high-quality well-equipped front loading machine with a condenser dryer. Ideal for discerning people with little available space.

### The tumble drying systems from Miele



#### Heat-pump dryers

Miele's particularly energy-efficient heat-pump dryers offer the same convenience and flexibility as conventional condenser dryers but use up to 50% less energy.



#### Condenser dryers

A condenser dryer gives you the option to install your appliance anywhere you want as the only connection required is a mains socket. Instead of ducting the moisture-laden air to atmosphere, condenser dryers cool it down in a closed air circuit.





# Overview of installation options

## Combine a washing machine and a tumble dryer.

### Washer-dryer stack

If there is not sufficient space available to install two appliances next to one another, most Miele washing machines and tumble dryers can be conveniently combined as a washer-dryer stack. In this arrangement, the washing machine is always installed under the tumble dryer. Miele offers various stacking kits for a stable connection between the two appliances. Some, e.g. the WTV 511 model, feature a practical drawer. This drawer is ideal for storing accessories for example or for conveniently resting the laundry basket on whilst loading and unloading the tumble dryer.



### Side-by-side

Technically and optically, Miele washing machines and tumble dryers match each other perfectly. This allows you to install both appliances side by side and transfer freshly washed textiles conveniently to the tumble dryer. ChromeEdition models with slanted fascia panels offer ergonomic advantages.

### Built-under

The Miele appliances from the ChromeEdition, W 3000 and T 8000 model series with straight fascia can be installed under a worktop. When replacing the machine lid with a building-under kit, these appliances fit, for example, below a worktop with a niche height of 82 cm.

### Slot-under

All Miele front-loading machines slot in under a worktop with a minimum niche height of 85 cm. This installation option does not require the appliance lid to be removed.

### Integrated

Some Miele washing machines and tumble dryers as well as the WT 2789i washer-dryer can be integrated, for example in a kitchen run. These appliances can either be delivered with a Miele front panel, or fitted on site with a panel matching kitchen cabinetry. Both options require a niche height of at least 82 cm.





# The Miele design

At Miele, you do not have to decide between innovative technology and an elegant design. The new laundry care generation combines functionality and aesthetics. In keeping with our company philosophy of "Immer besser" (Forever better), we attach great importance to ensuring that our laundry care appliances make your everyday work more convenient. Miele's new laundry care appliances fulfil this claim completely and even exceed expectations. This is thanks to our engineers who again set new standards in cleaning performance with their innovative ideas. In addition to this, the new appliances leave nothing to be desired in terms of highest user convenience and unique design. And, best of all, for each Miele washing machine there is a matching tumble dryer.

Experience for yourself the revolutionary cleanliness.





# Efficiency and sustainability

The responsibility for our environment has long been a tradition at Miele for more than 110 years. Our natural environment is the foundation of our existence which we want to protect. This begins with the selection of materials, ensuring efficient production and ends, after a long machine life, in environmentally friendly recycling.



## **Economical and environmentally friendly washing**

Miele engineers invest their time and energy in finding ways to save energy. All W1 washing machine models effortlessly achieve A+++, the highest energy efficiency rating, and count among the most efficient and economical appliances in the world.

With Miele's new washing machines you can save electricity and water as never before. But you cannot economise on perfect cleanliness.

## **Economical and environmentally friendly drying**

Over the last 15 years Miele – as a pioneer in laundry care – has reduced electricity consumption of its tumble dryers by 60%. This is why all Miele tumble dryers with heat-pump technology already achieve an A+ energy efficiency rating.

We at Miele are spearheading this technology, true to our credo of being 'Immer besser' ('Forever better').



washing machines . tumble dryers . washer dryer .





## washing machines

Merely a matter of performance: we have the perfect one for everyone! For your individual requirements Miele offers various washing machine models.

. CareCollection . steam ironing system . rotary ironer . professional laundry care





## The new washing machines W1

Wash performance: world class!

Miele innovations  
revolutionise laundry care

A new era in the history of laundry care: with Miele's new W1 generation of washing machines, it's easier and more economical than ever before to get your laundry clean.

Three world firsts are responsible for this revolution: Miele's PowerWash System increases cleaning performance, TwinDos allows automatic dispensing of liquid detergent for both coloured and white laundry and CapDosing is the perfect solution for fabric specific laundry care.





PowerWash



Energy efficiency A+++



TwinDos



8-9 kg load capacity



CapDosing



1600 rpm

# The new washing machines

## Wash performance: world class!

### Miele innovations revolutionise laundry care

A new era in laundry care: with Miele's new W1 appliance generation, laundry is washed cleaner, more conveniently, more economically and textile-specific than ever before. No fewer than three world premieres are responsible for this revolutionary cleanliness in washing: Miele's PowerWash System increases cleaning performance verifiably. Thanks to TwinDos you can wash your coloured laundry perfectly with liquid detergent, and now for the first time your white textiles too. And CapDosing is the perfect addition for special applications.

**Exclusive to Miele**

#### PowerWash

Cleaner, faster and more economical thanks to the Power Shower for your laundry.

**Exclusive to Miele**

#### TwinDos

Cleaner than ever before! Automatic dispensing: with the revolutionary 2-Phase-System or other liquid detergents.

**Exclusive to Miele**

#### CapDosing

Optimum results on textiles requiring special treatment: conveniently portioned dispensing of special detergents, fabric conditioner or booster.

#### Energy efficiency A+++

With Miele's new washing machines you can save electricity and water as never before.

#### 8-9kg load capacity

Miele washing machines offer a load capacity of up to 9 kg.

#### 1600 rpm

Spin speed options of up to 1600 rpm.



# World Premiere! Powerwash

## Cleaning performance: 10% better

**Exclusive to Miele** Miele's PowerWash System\* revolutionises washing.

It achieves a cleaning performance at a speed which has never been achieved before in laundry care. The PowerWash System comprises two superior performance characteristics: the "Intensive Flow" and the "QuickPowerWash" programme. The intelligent principle of "Intensive Flow" ensures the outstanding wash performance from Miele appliances. Thanks to a sophisticated suds cycle, the efficiency of the detergent is fully utilised and the wash performance increased by 10%. Cleanliness you can not only see but also measure objectively<sup>1)</sup>. Your laundry is washed in less than one hour in the QuickPowerWash programme without compromising the perfect cleaning results.

**Excellent cleaning performance in less than one hour<sup>1)</sup>**



Confirmed by independent experts: the renowned WfK Institute for Applied Research in Krefeld, Germany, tested the significantly improved wash performance of Miele's new washing machines with the Intensive Flow feature from the PowerWash System:

**Best cleaning performance: at least 10% better than previously<sup>1)</sup>**







**Miele**  
**PowerWash**  
Cleaning performance:  
10% better



# World Premiere! TwinDos

## The best liquid detergent system

Dispensing completely automatic



### Perfect wash results

Miele has revolutionised laundry care: no other liquid detergent system washes whites as well as coloureds as thoroughly as the 2-Phase-System from Miele. This was proven with comprehensive tests.

The secret of the excellent wash performance lies in the two liquid detergent components UltraPhase 1 and UltraPhase 2: they are dispensed from separate cartridges at the perfect point in time during the wash process – completely automatically. The great advantage of this dispensing principle is that for the first time you can now wash not only coloureds but also whites perfectly with liquid detergents. A revolution in laundry care as conventional liquid detergents do not contain any bleach. This is only possible with Miele's 2-Phase-System which dispenses the required active components in stages.

**Exclusive  
to Miele**

### TwinDos

Dispensing completely automatically - TwinDos offers 2 options for this: you either fill liquid detergent or fabric conditioner in the supplied containers or you use Miele's 2-Phase-System. This washes white and coloured laundry perfectly clean. For maximum efficiency, TwinDos dispenses UltraPhase 1 and UltraPhase 2 at the appropriate time in the wash process. This enables Miele to achieve best wash performance and offers the best liquid detergent system on the market at the touch of a button.

Further information on Miele detergents is available on pages 92.



\* Features will vary depending on model

**UltraPhase  
1&2**  
The best liquid  
detergent system





# WORLD PREMIERE! CapDosing

## The perfect addition for special applications

### Simple dispensing – perfect results

Would you like to achieve perfect wash results on items requiring special treatment such as woollens or outdoor clothing too – with very little effort? For this, we now offer Miele Caps. These small portioned capsules are simply placed into the fabric conditioner compartment. The Miele washing machine dispenses the contents of the Caps at the perfect point in time during the wash process – completely automatically.



For special applications we currently offer 10 different types of Miele Capsules: 5 special detergents (Sport, Down, Outdoor, WoolCare, SilkCare), 3 fabric conditioners (Aqua, Nature, Cocoon), a reproofing agent as well as the Booster as an additive which deals with persistent soiling. Try them out – the simple operation and reliable results will amaze you.

Textiles which require special treatment and in the past had to be taken to a dry-cleaner can now also be treated perfectly with Miele Caps. This saves time and money.

**Exclusive  
to Miele**

### CapDosing

Convenient capsules: conveniently portioned dispensing of special detergents, fabric conditioners, a reproofing agent and a booster.

**CapDosing**  
The perfect addition  
for special application



Further information on Miele Caps is available  
on pages 92.







SoftSteam honeycomb

drum with pre-ironing

"Pre-ironing" programme  
smoothes your textiles  
before they leave the drum.

Do you love fashionable and individual clothes? In that case, the value of one single wash load could be higher than the purchase price of your washing machine. It is therefore worth taking the best possible care of your clothes to retain their value as long as possible: with Miele washing machines. The web-like structure of the Miele honeycomb drum allows a thin film of water to be created between the drum and the laundry. This results in laundry gliding gently and protects the fibres perfectly. Every single one of the shouldered holes in the body of the Miele honeycomb drum are polished and smooth, and considerably smaller than those of conventional drums. This ensures that the mechanical strain on your textiles is extremely reduced. No pimples even at highest spin speeds, and your laundry falls in a loose heap to the bottom of the drum. When you select the "Pre-ironing" function, the drum is heated after the last spin cycle. This has a smoothing effect and loosens the laundry which can then be easily removed. And above all: Ironing is easier and faster.

# Many selling points in favour of Miele W<sup>1</sup>

## Overview of Miele washing machines' further product benefits\*



### Intensive Flow

Faster, cleaner, more economical: the intelligent water path system for extraordinary cleaning performance.



**Exclusive to Miele**

### QuickPowerWash

Fast or thorough?

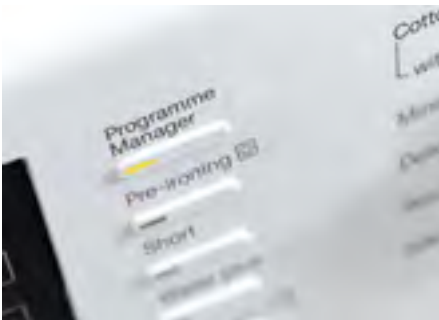
Miele meets both requirements and achieves excellent cleanliness in less than one hour.



**Exclusive to Miele**

### SoftSteam honeycomb drum with pre-ironing

Achieving perfectly laundered textiles fast: the "Pre-ironing" programme smooths your textiles before they leave the drum.



**Exclusive to Miele**

### ProgrammeManager

Intelligent and individual:

with 5 programme options (Intensive, Eco, Extra Gentle, Extra Quiet, AllergoWash) Miele meets your personal requirements at the touch of a button.



**Exclusive to Miele**

### Mixed loads

Substantial savings: with this special purpose programme, you can wash various types of textiles together.



**Exclusive to Miele**

### "Stains" option

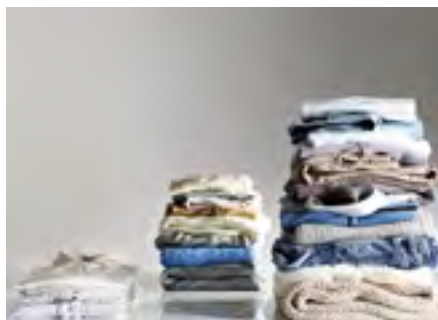
Every stain is different:

that is why Miele wash programmes can be adjusted precisely to suit different types of stains.



### Low consumption values

Economical and efficient: almost all Miele washing machines achieve an EU Energy Efficiency A+++, the highest energy efficiency rating.



### Automatic load control

Metrology à la Miele: low load, less water and electricity consumption. Fully automatically.



### Flowmeter

Not a drop too much: water intake is measured with great precision. For reliable economic operation.



### ProfiEco motor

Powerful and economical: with ProfiEco motors from Miele laundry is washed effectively, quietly and economically - reliably.



### EcoFeedback

Consumption under control: this function gives you full control over electricity and water consumption.



### **Exclusive to Miele** AutoClean detergent dispenser – patented<sup>1)</sup>

No residue in the detergent dispenser: after every wash programme, powerful jets of water ensure the dispenser is clean.



### Delay start and countdown indicator

According to schedule: programme your appliance to start at a time suitable for you – in accordance with your daily schedule.



### Drum lighting

Enlightening: you cannot overlook a piece of laundry in the perfectly illuminated honeycomb drum when unloading.



### Waterproof system (WPS)

Double safety: in the event of a leak, a double solenoid valve stops the flow of water directly at the stopcock.



### WaterControl System (WCS)

Everything dry: WCS monitors the water intake, detects leakages and water in the drip tray.

<sup>1)</sup>European patent EP 2 022 884 B1.



# As versatile as your clothing

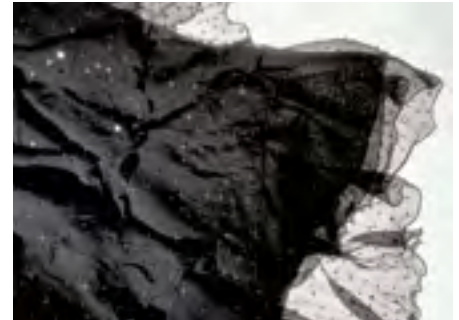
## Programmes\* tailored to the needs of individual textiles



**Exclusive to Miele** **Automatic Plus<sup>1)</sup>**  
For mixed loads: cottons and synthetics can be conveniently processed together.



**Down**  
Full volume: down-filled textiles such as jackets and pillows remain fluffy and stay in shape.



**Dark garments**  
Intensive colours: dark garments retain their intensive colour thanks to the gentle treatment they receive.



**Exclusive to Miele** **Mixed loads**  
Substantial savings: with this special purpose programme, you can wash various types of textiles together.



**Exclusive to Miele** **Express 20**  
Quickly freshened up: lightly soiled and small laundry quantities are quickly ready for use again.



**Feather duvets**  
Loose filling: feather- and down-filled duvets are gently washed and perfectly spun.



**Curtains**  
Sparkling clean: the automatic pre-wash programme removes dust and soil before the "Intensive Wash" cycle.



**Reproofing**  
Best possible reactivation process: reproofing of functional clothing with a special agent during the wash cycle.



**Denim**  
No bleaching: this programme ensures that colours are retained without unsightly bleached areas or creases.



### Pillows

Pleasantly fresh: even large pillows with synthetic filling look as good as new.



### New textiles

Shape maintained: new textiles are cleaned gently. This treatment retains their colour and shape.



### Shirts

Prevents creasing: reduces creasing and simplifies the ironing of shirts and blouses significantly.



### Outdoor

Washing without loss of function: high-quality outdoor wear retains its functionality no matter what the weather.



**Exclusive to Miele** **QuickPowerWash**  
Fast and thorough: clean laundry in less than 1 hour.

# As versatile as your clothing

Special programmes\* tailored to the needs of individual textiles



## Silks

Excellent care: all hand-washable textiles without wool content are washed extremely gently.



## Sportswear

The fitness programme: sportswear is ready to wear again in next to no time.



## Synthetics

Gentle and with care: synthetics remain looking good and perfectly in shape for longer when washed with this special purpose programme.



## Woolens

No shrinkage, no felting: a particularly gentle wash programme for your delicate woollen textiles.

With a wide range of special purpose programmes, Miele washing machines and tumble dryers ensure that textiles are given the precise treatment they require. Washing and drying programmes are perfectly matched to produce best possible results.





# The perfect washing machine for you

## Product overview



### WKR 570 WPS

- 9 kg honeycomb drum/1600 rpm
- 4-line clear text LCD/ Slanted fascia
- PowerWash/ TwinDos/ CapDos/
- Pre-ironing/ ProfiEco motor/ Stains
- Drum lighting
- AllergoWash option
- Special programme: QuickPowerWash, Pillows, Down, Duvet, Curtain, First wash, Mixed items, Sportswear, Outerwear, Proofing, Favourite

\$26,980



### WKH 120 WPS

- 8 kg honeycomb drum/1600 rpm
- 1-line LCD
- PowerWash/ TwinDos/ CapDos/
- Pre-ironing/ ProfiEco motor/ Stains
- AllergoWash option
- Special programme: QuickPowerWash, Duvet, Sportswear, Outerwear, Proofing
- 82 cm built-under possible

\$21,980



### WKG 120

- 8 kg honeycomb drum/1600 rpm/ WCS
- 1-line LCD
- TwinDos/ CapDos
- Pre-ironing/ ProfiEco motor/ Stains
- Special programme: Duvet, Sportswear, Outerwear, Proofing
- 82 cm built-under possible

\$17,980



### WKF 120

- 8 kg honeycomb drum/1600 rpm/WCS
- 1-line LCD
- PowerWash/ CapDos
- Pre-ironing/ ProfiEco motor/ Stains
- AllergoWash option
- Special programme: QuickPowerWash, Duvet, Sportswear, Outerwear, Proofing
- 82 cm built-under possible

\$15,980







# Washing machines, ChromeEdition

## Product summary



Model/Sales designation	WKR 570 WPS	WKH 120 WPS	WKG 120
Load in kg	9.0	8.0	8.0
<b>Installation</b>			
Stackable/Side-by-Side	●/●	●/●	●/●
Can be slotted-under/built-under height	●/85 cm	●/82 cm	●/82 cm
Door hinge side	right	right	right
<b>Spin</b>			
Max. spin speed/Residual moisture (%)	1,600/44	1,600/44	1,600/44
Rinse hold/"Without spin" function	●/●	●/●	●/●
<b>Design</b>			
Machine colour/Fascia colour	Lotus white/Lotus white	Lotus white/Lotus white	Lotus white/Lotus white
Rotary selector switch colour	Lotus white	Lotus white	Lotus white
Operation	Rotary selector	Rotary selector	Rotary selector
Fascia panel version	Slanted	Straight	Straight
Display	4 line TFT	1-line	1-line
<b>Cleaning performance</b>			
PowerWash System/TwinDos	●/●	●/●	-/●
CapDosing/Stains option	●/●	●/●	●/●
<b>Gentle laundry care</b>			
SoftSteam honeycomb/Honeycomb	●/-	●/-	●/-
<b>User convenience</b>			
Pre-ironing	●	●	●
Delay start up to 24 h/Time left display/Time-of-day indicator	●/●/●	●/●/-	●/●/-
Drum lighting/Audible signal/Hygiene info	LED/●/●	-/●/●	-/●/●
Display language selection/AutoClean detergent dispenser	●/●	●/●	●/●
<b>Efficiency and sustainability</b>			
EU Efficiency classification/Spin performance classification	A+++/A	A+++/A	A+++/A
Water consumption per load (litres)/Energy consumption per load (kWh)*	55/0.9	48/0.8	48/0.92
Noise level during washing/spinning in db(A) re 1 pW	46/72	46/72	48/73
Programme duration**	119/69/59	119/69/59	119/69/-
Profi Eco motor/PWM motor	●/-	●/-	●/-
EcoFeedback function	●	●	●
Automatic load control/Flowmeter/Foam sensing	●/●/●	●/●/●	●/●/●
<b>Main wash programmes</b>			
Cottons/Minimum iron/Delicates	●/●/●	●/●/●	●/●/●
QuickPowerWash/Express/Express 20	●/-/●	●/-/●	-/-/●
Automatic plus/Shirts/Silks/Woolens	●/●/●/●	●/●/●/●	●/●/●/●
Dark laundry/Denim/Dark items, Denim	●/●/●	-/-/●	-/-/●
Curtains/Pillows/First Wash/Starch	●/●/●/●	-/-/-/●	-/-/-/●
Sportswear/Outdoor/Proofing/Down duvets	●/●/●/●	●/●/●/●	●/●/●/●
Mixed load/Favourites	●/●	-/-	-/-
<b>Main wash options</b>			
ProgammeManager (Intensive, AllergoWash, Eco, Quiet, Gentle)	●	●	-
Short/Soak/Water plus/Pre-wash	●/●/●/●	●/-/●/-	●/●/●/-
<b>Quality</b>			
Suds container	Stainless steel	Stainless steel	Stainless steel
Enamelled front/Counterweights made of cast iron	●/●	●/●	●/●
<b>Safety</b>			
Water Control System/WaterProof System/Water Safety System	-/●/-	-/●/-	●/-/-
Child-safety feature/PIN code	●/●	●/●	●/●
<b>Technical data</b>			
Appliance dimensions in mm (W x H x D)	596 x 850 x 636	596 x 850 x 636	596 x 850 x 636
Weight/door open depth	100 kg/1054 mm	100 kg/1054 mm	100 kg/1054 mm
Stacking kit/stacked height	WTV501/172 mm	WTV501/172 mm	WTV501/172 mm
Stacking kit with drawer/stacked height	WTV511/181 mm	WTV511/181 mm	WTV511/181 mm
Matching Model	TKR 450 WP	TKG 440 WP	TKG 440 WP/TKB 440 WP



\*According to EN60456 tested using Cotton 60°C (with a 8 or 9 kg load, depending on model)

\*\*Cottons 60°C, 8 or 9 kg load / Delicates 30°C, 3 kg load / QuickPowerWash 40°C, 5 kg load (programme depending on model)



<b>Model/Sales designation</b>	<b>WKF 120 WPS</b>
Load in kg	8.0
<b>Installation</b>	
Stackable/Side-by-Side	●/●
Can be slotted-under/built-under height	●/82 cm
Door hinge side	right
<b>Spin</b>	
Max. spin speed/Residual moisture (%)	1,600/44
Rinse hold/"Without spin" function	●/●
<b>Design</b>	
Machine colour/Fascia colour	Lotus white/Lotus white
Rotary selector switch colour	Lotus white
Operation	Rotary selector
Fascia panel version	Straight
Display	1-line
<b>Cleaning performance</b>	
PowerWash System/TwinDos	●/–
CapDosing/Stains option	●/●
<b>Gentle laundry care</b>	
SoftSteam honeycomb/Honeycomb	●/–
<b>User convenience</b>	
Pre-ironing	●
Delay start up to 24 h/Time left display/Time-of-day indicator	●/●/–
Drum lighting/Audible signal/Hygiene info	–/●/●
Display language selection/AutoClean detergent dispenser	●/●
<b>Efficiency and sustainability</b>	
EU Efficiency classification/Spin performance classification	A+++/A
Water consumption per load (litres)/Energy consumption per load (kWh)*	48/0.8
Noise level during washing/spinning in db(A) re 1 pW	48/73
Programme duration**	119/69/59
Profi Eco motor/PWM motor	●/–
EcoFeedback function	●
Automatic load control/Flowmeter/Foam sensing	●/●/●
<b>Main wash programmes</b>	
Cottons/Minimum iron/Delicates	●/●/●
QuickPowerWash/Express/Express 20	●/–/●
Automatic plus/Shirts/Silks/Woolens	●/●/●/●
Dark laundry/Denim/Dark items, Denim	–/–/●
Curtains/Pillows/First Wash/Starch	–/–/–/●
Outdoor/Proofing/Down duvets	●/●/●
Mixed load/Favourites	–/–
<b>Main wash options</b>	
ProgrammeManager (Intensive, AllergoWash, Eco, Quiet, Gentle)	●
Short/Soak/Water plus	●/–/●
Pre-wash/Pre-wash with timer	–/–
<b>Quality</b>	
Suds container	Stainless steel
Enamelled front/Counterweights made of cast iron	●/●
<b>Safety</b>	
Water Control System/WaterProof System/Water Safety System	●/–/–
Child-safety feature/PIN code	●/●
<b>Technical data</b>	
Appliance dimensions in mm (W x H x D)	596 x 850 x 636
Weight/door open depth	100 kg/1054 mm
Stacking kit/stacked height	WTV501/172 mm
Stacking kit with drawer/stacked height	WTV511/181 mm
Matching Model	TKB 440 WP



\*According to EN60456 tested using Cotton 60°C (with a 8 or 9 kg load, depending on model)

\*\*Cottons 60°C, 8 or 9 kg load / Delicates 30°C, 3 kg load /

QuickPowerWash 40°C, 5 kg load (programme depending on model)

# Further washing machines

The classic line  
and their benefits













# Miele honeycomb drum

**Exclusive to Miele** The patented<sup>1)</sup> Miele honeycomb drum

Do you love fashionable and individual clothes? In that case, the value of one single wash load could be higher than the purchase price of your washing machine. It is therefore worth taking the best possible care of your clothes to retain their value as long as possible: with Miele washing machines. The web-like structure of the Miele honeycomb drum allows a thin film of water to be created between the drum and the laundry. This results in laundry gliding gently and protects the fibres perfectly. Every single one of the shouldered holes in the body of the Miele honeycomb drum are polished and smooth, and considerably smaller than those of conventional drums. This ensures that the mechanical strain on your textiles is extremely reduced. No pimples even at highest spin speeds, and your laundry falls in a loose heap to the bottom of the drum.

The result: The Wfk Cleaning Technology Institute Krefeld, Germany, confirms the optimum gentle treatment afforded by the Miele honeycomb drum.



# Further Miele washing machine benefits\*



## Low consumption values

Economical and efficient: many Miele washing machines already achieve an A+++ rating today, the highest energy efficiency rating.



## **Exclusive to Miele** AutoClean detergent dispenser – patented <sup>1)</sup>

No residue in the detergent dispenser: after every wash programme, powerful jets of water ensure the dispenser is clean.



## Automatic load control

Metrology à la Miele: low load, less water and electricity consumption. Fully automatically.



## Flowmeter

Helps reduce water consumption: with this special function water intake is accurately measured.



## Delay start and countdown indicator

According to schedule: program your appliance to start at a time suitable for you – in accordance with your daily schedule.

# The perfect washing machine for you

## Product overview



### **W 1914**

- 7 kg honeycomb drum/ 1400 rpm/WCS
- Time left display/Slimline LCD
- High quality moulded door
- AutoClean detergent drawer
- Programme sequence indication/Buzzer

\$12,980



### **W 3370 Edit. 111**

- 7 kg honeycomb drum/ 1400 rpm
- WCS/Time left display
- AutoClean detergent drawer/ Delay start
- Programme sequence indication
- 82 cm built-under possible

\$10,980



### **W 3164 Edit. 111**

- w7 kg honeycomb drum/ 1400 rpm
- WSS/Time left display
- 82 cm built-under possible

\$9,380

# The perfect washing machine for you

## Product overview



### W 2859i WPM

- 5.5 kg honeycomb drum/ 1600 rpm
- Supertronic touch control
- Optional stainless steel front panel
- Special programme: Pillows, Hygiene, Curtains, Soft toy, Trainers, First wash, Sportswear, Outerwear, Proofing, Favourite

\$33,000



### Front panels W/T/FV 60

From stainless steel for elegant integration into living environment

- Height: 596 mm
- For integrated W 2000i washing machines, T 4000 Ci tumble dryers and WT 2000i washer-dryers

\$3,000



### Washer-dryer stacking kit WTV 410

For the safe installation of a washer-dryer stack, with worktop.

- Integrated worktop with push/pull function
- For integrated washing machines: W 2000i
- For integrated tumble dryers: T 4000Ci
- Color: Stainless Steel

\$1,700

Front trim stainless steel for WTV 410

\$1,700

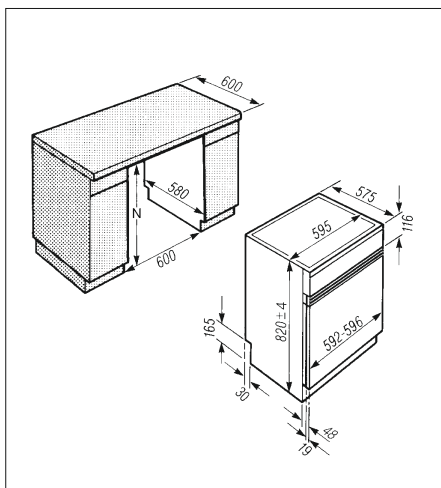


### Front panels W/T/FV 64

From stainless steel for elegant integration into living environment

- Height: 636 mm
- For integrated W 2000i washing machines, T 4000 Ci tumble dryers and WT 2000i washer-dryers
- Not suitable for stacked tumble dryer

\$3,250







# Washing machines, W 1000 / W 3000

## Product summary



Model/Sales designation	W 1914	W 3370 Edit. 111	W 3164 Edit. 111
Load in kg	7.0	7.0	7.0
<b>Installation</b>			
Stackable/Side-by-Side	●/●	●/●	●/●
Can be slotted-under/built-under height	●/85 cm	●/82 cm	●/82 cm
Door hinge side	right	right	right
<b>Spin</b>			
Max. spin speed/Residual moisture (%)	1,400/55	1,400/52	1,400/52
Rinse hold/"Without spin" function	●/●	●/●	-/●
<b>Design</b>			
Machine colour/Fascia colour	Lotus white/Lotus white	Lotus white/Lotus white	Lotus white/Lotus white
Rotary selector switch colour	Lotus white	Lotus white	Lotus white
Operation	Rotary selector	Rotary selector	Rotary selector
Fascia panel version	5° incline	Straight	Straight
Display	slimline	3-digit	3-digit
<b>Gentle laundry care</b>			
SoftSteam honeycomb/Honeycomb	-/●	-/●	-/●
<b>User convenience</b>			
Pre-ironing	-	-	-
Delay start up to 24 h/Time left display/Time-of-day indicator	-/●/-	●/●/-	-/●/-
Drum lighting/Audible signal/Hygiene info	-/●/●	-/-/●	-/-/-
Display language selection/AutoClean detergent dispenser	-/●	-/●	-/-
<b>Efficiency and sustainability</b>			
HK energy efficiency label	Grade 1	Grade 1	Grade 1
EU Efficiency classification/Spin performance classification	A+++/B	A++/B	A+/B
Water consumption per load (litres)/Energy consumption per load (kWh)*	55/0.8	52/0.95	51/1.1
Noise level during washing/spinning in db(A) re 1 pW	52/74	52/74	54/77
Programme duration**	179/56	119/56	134/59
Profi Eco motor/PWM motor	-/●	-/●	-/●
EcoFeedback function	-	-	-
Automatic load control/Flowmeter/Foam sensing	●/●/●	●/-/●	●/●/●
<b>Main wash programmes</b>			
Automatic plus/Automatic/Intensive plus/Starch	●/-/●/●	●/-/-/●	-/●/-/●
Cottons/Minimum iron/Delicates	●/●/●	●/●/●	●/●/●
QuickPowerWash/Express/Express 20	-/-/●	-/-/●	-/●/-
Shirts/Silks/Woolens	-/-/●	●/-/●	●/●/●
Dark laundry/Denim/Dark items, Denim	-/-/●	-/-/●	●/●/-
<b>Main wash options</b>			
Short/Soak/Water plus	●/●/●	●/●/●	●/●/●
Pre-wash/Pre-wash with timer/Extra quiet	-/●/●	●/-/-	●/-/-
<b>Quality</b>			
Suds container	Stainless steel	Stainless steel	Stainless steel
Enamelled front/Counterweights made of cast iron	●/●	●/●	●/●
<b>Safety</b>			
Water Control System/WaterProof System/Water Safety System	●/-/-	●/-/-	-/-/●
Child-safety feature/PIN code	●/●	-/-	-/-
<b>Technical data</b>			
Appliance dimensions in mm (W x H x D)	595 x 850 x 656	595 x 850 x 615	595 x 850 x 615
Weight/door open depth	99 kg/1092 mm	98 kg/987 mm	101 kg/987 mm
Stacking kit/Stacked height	WTV412/172 mm	WTV412/169 mm	WTV412/169 mm
Stacking kit with worktop/Stacked height	WTV414/170 mm	WTV406/170 mm	WTV406/170 mm
Matching Model	T 7944 C	T 8812 C	T 8812 C



# Washing machines, W 2000

## Product summary



<b>Model/Sales designation</b>	<b>W 2859i WPM</b>
Load in kg	5.5
<b>Installation</b>	
Stackable/Side-by-Side	-/●
Can be slotted-under/built-under height	-/82 cm
Door hinge side	right
<b>Spin</b>	
Max. spin speed/Residual moisture (%)	1,600/44
Rinse hold/"Without spin" function	●/●
<b>Design</b>	
Machine colour/Fascia colour	Stainless steel/Stainless steel
Rotary selector switch colour	-
Operation	Touch control
Fascia panel version	Straight
Display	Supertronic
<b>Gentle laundry care</b>	
SoftSteam honeycomb/Honeycomb	-/●
<b>User convenience</b>	
Pre-ironing	-
Delay start up to 24 h/Time left display/Time-of-day indicator	●/●/●
Drum lighting/Audible signal/Hygiene info	LED/●/●
Display language selection/AutoClean detergent dispenser	●/●
<b>Efficiency and sustainability</b>	
HK energy efficiency label	Grade 1
EU Efficiency classification/Spin performance classification	A+++/A
Water consumption per load (litres)/Energy consumption per load (kWh)*	45/0.73
Noise level during washing/spinning in db(A) re 1 pW	49/72
Programme duration	109/59
Profi FC motor	●
EcoFeedback function	-
Automatic load control/Flowmeter/Foam sensing	●/-/-
<b>Main wash programmes</b>	
Automatic plus/Sportswear/Trainers/Hygiene/Soft toys	●/●/●/●/●
Cottons/Minimum iron/Delicates	●/●/●
QuickPowerWash/Express/Express 20	-/-/●
Shirts/Silks/Woolens	●/●/●
Dark laundry/Denim/Dark items, Denim	●/●/-
Curtains/Pillows/First Wash/Starch	●/●/●/●
Outdoor/Proofing/Down duvets	●/●/-
Mixed load/Favourites	-/-
<b>Main wash options</b>	
Short/Soak/Water plus	●/●/●
Pre-wash/Pre-wash with timer/Extra quiet	●/-/●
CapDosing/Stains option	-/●
<b>Quality</b>	
Suds container	Stainless steel
Enamelled front/Counterweights made of cast iron	●/●
<b>Safety</b>	
WaterProof Metal	●
Child-safety feature/PIN code	-/●
<b>Technical data</b>	
Appliance dimensions in mm (W x H x D)	595 x 820 x 575
Weight/door open depth	94 kg/1180 mm
Drain hose/Inlet hose/Mains cable	150 cm/160 cm/160 cm
Matching Model	T 4859 Ci

\*According to EN60456 tested using Cotton 60°C, with a 5.5 kg load





washing machines . **tumble dryers** . washer dryer .



## tumble dryers

Tumble dryers get laundry dry quickly and conveniently. The principle is that warm air is passed through the garments to remove residual moisture from the fibres. Miele offers different types of drying system. The main features of each are briefly explained here.

. CareCollection . steam ironing system . rotary ironer . professional laundry care







## The new tumble dryers T<sup>1</sup>

Best drying results!

A new kind of freshness – only from Miele

Using innovative, sophisticated technology

Miele has perfected the art of drying laundry. Experience the results for yourself: perfectly dried, freshly scented, soft and fluffy. Three Miele features ensure this exclusive finish: Perfect Dry – an automatic mineral sensor ensures laundry is dried to precision. FragranceDos adds a fresh scent to laundry using Miele's unique fragrance flacons. SteamFinish smoothes laundry visibly and effortlessly – for easier and faster ironing or even eliminates the need for ironing altogether. Discover a new kind of freshness – with Miele.



Perfect Dry



Honeycomb drum



SteamFinish



Energy efficiency A+



FragranceDos



ProfiEco motor

# The new tumble dryers T1

## Best drying results!

### Miele innovations revolutionise laundry care

Discover a whole new laundry experience: with perfectly dried washing and fibre protection. Enjoy the feel of evenly and thoroughly dried, but not overdried, laundry: soft and fluffy textiles exactly the way you like them. Such excellent drying results do not simply happen by chance.

They are a result of the Perfect Dry function on Miele tumble dryers – thanks to the precise measuring of mineral content with mineral sensors. But there is even more to experience: a sense of freshness, flowers or harmony – with FragranceDos enveloping your laundry in a long-lasting and pleasant fragrance.

With SteamFinish your textiles are effectively smoother before they leave the tumble dryer – this considerably reduces the need for ironing.

Experience the best ever tumble drying results from Miele. Look forward to perfect laundry care you can see, smell and feel!

**Exclusive to Miele**

#### Perfect Dry

Always perfectly dried: Perfect Dry takes the calcium content of your water into account and modifies the process duration accordingly.

#### SteamFinish

Achieving perfectly laundered textiles fast: steam and heat smooth your textiles before they leave the tumble dryer.

**Exclusive to Miele**

#### FragranceDos

Freshness for all the senses: with Miele you not only have particularly bouncy, but also beautifully fragrant laundry.

**Exclusive to Miele**

#### Honeycomb drum<sup>1)</sup>

Fewer creases, easier ironing: the honeycomb structure allows laundry to be dried gently and evenly.

<sup>1)</sup>European patent EP 1,293,594 B1

#### Energy efficiency A+

In harmony with the environment: heat-pump dryers from Miele achieve the highest energy efficiency ratings.

#### ProfiEco motor

Powerful and economical: with ProfiEco motors from Miele, laundry is dried effectively, gently and economically.







14:16

0:56 h

Perfect Dry

EcoFeedback

Settings  
Washing level

Duration

Delay start



## Perfect Dry

Spot-on drying  
thanks to mineral  
sensors

## Perfect Dry

Only a Miele dries like a Miele

**Exclusive  
to Miele**

### Perfect Dry

Perfect drying results thanks to mineral sensors: thanks to this patented<sup>1)</sup> Perfect Dry system, your laundry dries perfectly – even if the water contains significant amounts of calcium. This is by no means the norm on tumble dryers. The calcium content in the water influences residual moisture sensing – and in turn has an impact on drying results. Perfect Dry with mineral sensors takes the current calcium content of your water into account when gauging residual moisture content and adjusts the programme accordingly. This ensures that your laundry is not too dry or too wet. The selected drying stage is always achieved.

\* Features will vary depending on model

<sup>1)</sup>German patent DE 19.719.661 C2





# World premiere!

## FragranceDos

Scented laundry  
just the way  
you like it

Fragrance flacons  
for tumble dryers – for a fresh  
and long-lasting fragrance –  
fully automatically

**Exclusive  
to Miele** With your Miele tumble dryer  
you can now enjoy the superb  
convenience of a long-lasting and well-  
balanced fragrance. The new Miele  
fragrances add your personal favourite  
scent to your laundry during the drying  
process. This results in particularly bouncy  
and beautifully fragrant laundry. Choose  
your very own personal favourite from 3  
fragrances.

The fragrance flacon<sup>1)</sup> is simply fitted into a  
holder on the fluff filter and distributes an  
unobtrusive fragrance evenly onto your  
laundry. By turning the flacon you can  
determine the intensity of the fragrance. For  
an ultimate freshness experience after each  
drying cycle!



<sup>1)</sup>One fragrance flacon for approx. 50 drying cycles.





# SteamFinish

The fast alternative to ironing – the "Steam Smoothing" programme

If ironing is not one of your favourite tasks, then you will appreciate Miele's 'Steam Smoothing' programme. At the beginning of the drying process, water is sprayed into the honeycomb drum creating a fine cloud of airborne water droplets which is heated by the drying air. The developing steam penetrates the textiles and visibly smoothes the items. This ensures that ironing is much easier and faster – or completely superfluous.

## SteamFinish

Steam application  
reduces the need  
for ironing





# Miele honeycomb drum

**Exclusive  
to Miele**

## **The patented<sup>1)</sup> Miele honeycomb drum**

The value of a dryer load can amount to more than that of the tumble dryer itself. A good reason to maintain the value of your laundry for as long as possible. Useful special programmes and intelligent functions such as Perfect Dry or the TwinPower system help to dry your laundry gently and economically.

### **Laundry care with the aircushion effect**

Your laundry floats softly on an air cushion which forms in the depressions of the sculpted honeycomb structure for a far gentler and less creased drying result, which makes ironing easier too.

### **Laundry care with a special lifting action**

Thanks to the unique honeycomb structure, the laundry is drawn higher up the rotating drum, allowing it to hover longer in the warm air, subjecting it to less mechanical handling.

<sup>1)</sup>European patent EP EP 1 293 594 B1



# Many selling points in favour of Miele T<sup>1</sup>

## Overview of Miele tumble dryers' further product benefits\*



**Exclusive to Miele** **EcoFeedback**  
Information always at a glance: energy consumption and fluff filter condition is indicated – for permanently low consumption.



**High condensation efficiency**  
Leak-proof: best condensation efficiency provides a pleasantly dry environment.



**Exclusive to Miele** **Integrated condensate drainage<sup>1)</sup>**  
Emptying not necessary: the condensation can be drained off via a hose directly into the sink or a U-tube.



**Maintenance-free heat exchanger**  
Twice as reliable: the two-ply combination filter protects the heat exchanger. The heat exchanger no longer requires cleaning.



**Extremely quiet**  
Drying in peace and quiet: airflow and vibration noises are reduced to a minimum.



**Delay start and countdown indicator**  
According to schedule: program your appliance to start at a time suitable for you – in accordance with your daily schedule.



**Door with glass screen**  
A perfect couple: with a new, modern door design, Miele tumble dryers match Miele washing machines to 100%.



**Drum lighting**  
Nothing can be overlooked: the honeycomb drum is perfectly illuminated. No item is left behind when unloading the machine.



**Intelligent drum reversal**  
For best drying results: changing the direction of drum rotation prevents laundry from tangling and creasing.



#### PinCode

To prevent unauthorised access: protect your machine from being used by third parties by activating the PIN code.



#### Anti-crease action

Practical: the laundry is loosened frequently after the drying programme has finished. This delays creasing.



#### Exclusive to Miele Enamelled front

As good as it looks: the coating is scratch-proof, corrosion-proof, impervious to acids and easy to clean.



#### "Clean airways" indicator

Efficient drying at all times: the appliance signals when the fluff filter should be cleaned.



#### Condensation container indicator

Clear message: a LED signal or the display indicate when the condensation container needs emptying.



#### Buzzer

Acoustic signal when laundry is dry: this prevents freshly dried laundry from remaining in the tumble dryer for longer than necessary.

# As versatile as your clothing

## Special programmes\* tailored to the needs of individual textiles



### Automatic Plus

For mixed loads: cottons and synthetics can be conveniently processed together.



### Steam smoothing

Achieving perfectly laundered textiles fast: steam and heat smooth your textiles before they leave the tumble dryer.



### Mixed loads

Substantial savings: with this special purpose programme, you can dry various types of textiles together.



### Express

Sometimes things have to be done at the double: small laundry quantities are quickly dried and ready for use again.



### Hygiene

Sustainable: dust mites and bacteria do not stand a chance with a special time/temperature profile.



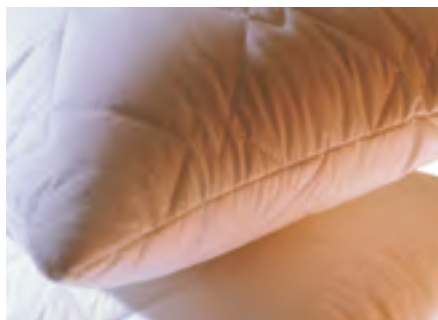
### Reproofing

Best possible reactivation effect: a thermal fixation process ensures excellent water-proof properties.



### Denim

Perfect results: protects your favourite denims from unsightly bleached stripes and creases.



### Pillows

Loose filling: even large pillows look as good as new again – whether with feathers, down or synthetic filling.



### Shirts

Reduces creasing: reduces creasing and simplifies the ironing of shirts and blouses significantly.





### **Outdoor**

Drying gently without loss of function: retains the functionality of multi-layered textiles with breathable membranes.



### **Finish Silks**

No residue in the detergent dispenser: after every wash programme, powerful jets of water ensure the dispenser is clean.



### **Gentle smoothing**

Great smoothing effect: damp as well as dry laundry is visibly smoother.



### **Sportswear**

The fitness programme: with this programme, your sportswear is ready to wear again in next to no time.



### **Synthetics**

Takes care of synthetic fibres: synthetics remain looking good and in shape for longer when dried with this special purpose programme.



### **Finish Woollens**

Finish with a bounce: delicate woollen textiles are treated extremely gently which retains their value.



# The perfect tumble dryer for you

## Product overview



### TKR 450 WP

- 9 kg honeycomb drum
- 4-line clear text LCD/ Slanted fascia
- Heat pump/ ProfiEco motor/ Fragrance
- PerfectDry/ Steam smoothing
- Freshen up/ Auto load
- Special programmes: Pillows, Basket, Shirts, Cottons hygiene, Mixed items, Sportswear, Outerwear, Proofing, Favourites, Silks

\$24,980



### TKG 440 WP

- 8 kg honeycomb drum
- 1-line LCD/ Heat pump/ Fragrance
- PerfectDry/ Steam smoothing
- Freshen up/ Auto load
- Special programmes: Basket, Shirts, Sportswear, Outerwear, Proofing, Silks
- 82 cm built-under possible

\$19,980



### TKB 440 WP

- 8 kg honeycomb drum
- Time left display/ Silver-painted door ring
- Heat pump
- Fragrance/ PerfectDry
- Special programmes: Silks
- 82 cm built-under possible

\$15,980



### T 7944 C

- 7 kg honeycomb drum
- Condenser system
- PerfectDry
- Time left display
- Option: Low temperature

\$11,980



### T 8812 C

- 7 kg honeycomb drum
- Condenser system
- PerfectDry
- Programme sequence indication
- Option: Low temperature
- 82 cm built-under possible

\$9,980



# The perfect tumble dryer for you

## Product overview



### T 4859 Ci

- 6 kg honeycomb drum
- Drum lighting
- Supertronic touch control
- Condenser system
- Optional stainless steel front panel
- Special programmes: Pillows, Cotton hygiene, Sportwear, Outerwear, Proofing, Favourite, Silks
- Option: Low temperature

\$29,000



### Front panels W/T/FV 60

- From stainless steel for elegant integration into living environment
- Height: 596 mm
  - For integrated W 2000i washing machines, T 4000 Ci tumble dryers and WT 2000i washer-dryers

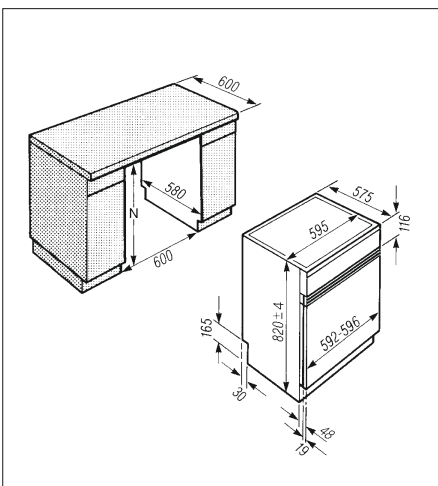
\$3,000



### Front panels W/T/FV 64

- From stainless steel for elegant integration into living environment
- Height: 636 mm
  - For integrated W 2000i washing machines, T 4000 Ci tumble dryers and WT 2000i washer-dryers
  - Not suitable for stacked tumble dryer

\$3,250



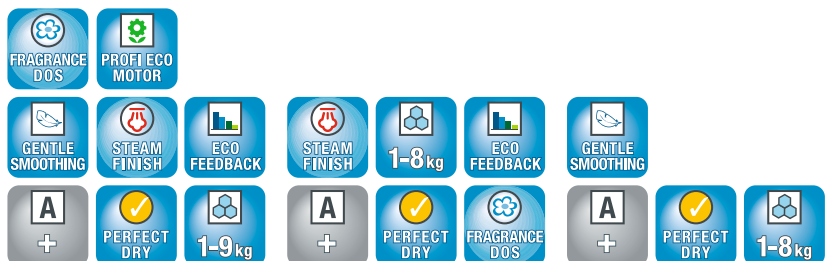


# Tumble dryers, ChromeEdition

## Product summary



Model/Sales designation	TKR 450 WP	TKG 440 WP	TKB 440 WP
Load in kg	9.0	8.0	8.0
<b>Installation</b>			
Stackable/Side-by-Side	●/●	●/●	●/●
Can be slotted-under/built-under height	●/85 cm	●/82 cm	●/82 cm
Door hinge side	Left	Left	Left
<b>Construction type</b>			
Condenser dryer/Heat-pump dryer	-/●	-/●	-/●
<b>Design</b>			
Machine colour/Fascia colour	Lotus white/Lotus white	Lotus white/Lotus white	Lotus white/Lotus white
Rotary selector switch colour	Lotus white	Lotus white	Lotus white
Fascia panel version	Slanted	Straight	Straight
Operation	Rotary selector	Rotary selector	Rotary selector
Display	4-line	1-line	3-digit
<b>Drying results</b>			
PerfectDry	●	●	●
Fragrance scenting	●	●	●
SteamFinish	●	●	-
Intelligent drum reversing	●	●	●
<b>Gentle laundry care</b>			
Patented honeycomb drum	●	●	●
<b>User convenience</b>			
Integrated condensate drainage	●	●	●
Delay start up to 24 h/Time left display/Time-of-day indicator	●/●/●	●/●/-	●/●/-
Drum lighting/Display language selection	LED/●	LED/●	LED/-
<b>Efficiency and sustainability</b>			
EU Energy/Condensation efficiency classification	A+/A	A+/A	A+/A
Energy consumption per load in kWh*	2.41	2.14	2.14
Noise level during standard programme in db(A) re 1 pW	64	64	64
Duration of standard programme in min	190	156	156
EcoFeedback function/ProfiEco motor	●/●	●/-	-/-
Maintenance-free heat exchanger	●	●	●
<b>Main drying programmes</b>			
Automatic plus/Basket/Demin/Sportswear/Cotton hygiene	●/●/●/●/●	●/●/●/●/-	-/-/●/-/-
Cottons/Minimum iron/Delicates	●/●/●	●/●/●	●/●/●
Shirts/Finish silks/Finish woollens	●/●/●	●/●/●	-/●/●
Steam smoothing/Gentle smoothing	●/●	●/●	-/●
Express/Warm air/Cool air	●/●/●	●/●/●	●/●/-
Outdoor/Proofing/Standard pillows	●/●/●	●/●/-	-/-/-
Mixed load/Favourites	●/●	-/-	-/-
<b>Main drying options</b>			
Low temperature/Gentle tumble	-/●	-/●	-/●
Freshen up/auto-load control	●/●	●/●	-/-
Anti-crease action/Audible signal	●/●	●/●	●/●
<b>Quality</b>			
Soft ribs/Enamelled front	●/●	●/●	●/●
High-quality 3-component seals	●	●	●
<b>Safety</b>			
Child-safety feature/PIN code	●/●	●/●	●/●
"Empty container" indicator/"Clean filters" indicator	●/●	●/●	●/●
<b>Technical data</b>			
Appliance dimensions in mm (W x H x D)	596 x 850 x 636	596 x 850 x 636	596 x 850 x 636
Weight/door open depth	61 kg/1054 mm	61 kg/1054 mm	61 kg/1054 mm
Stacking kit/Stacked height	WTV501/172mm	WTV501/172mm	WTV501/172mm
Stacking kit with drawer/Stacked height	WTV511/181 mm	WTV511/181 mm	WTV511/181 mm
Matching Model	WKR 570 WPS	WKH 120 WPS/WKG120	WKG 120/WKF120





# Tumble dryers, Classic Line

## Product summary



Model/Sales designation	T 7944 C	T 8812 C	T 4859 Ci
Load in kg	7.0	7.0	6.0
<b>Installation</b>			
Stackable/Side-by-Side	●/●	●/●	●/●
Can be slotted-under/built-under height	●/85 cm	●/82 cm	-/82cm
Door hinge side	Left	Left	Left
<b>Construction type</b>			
Condenser dryer/Heat-pump dryer	●/-	●/-	●/-
<b>Design</b>			
Machine colour/Fascia colour	Lotus white/Lotus white	Lotus white/Lotus white	Stainless Steel/Stainless Steel
Rotary selector switch colour	Lotus white	Lotus white	-
Fascia panel version	5° incline	Straight	Straight
Operation	Rotary selector	Rotary selector	Touch control
Display	Slimline	-	Supertronic
<b>Drying results</b>			
PerfectDry	●	●	●
Fragrance scenting	-	-	-
SteamFinish	-	-	-
Intelligent drum reversing	●	●	●
<b>Gentle laundry care</b>			
Patented honeycomb drum	●	●	●
<b>User convenience</b>			
Integrated condensate drainage	●	●	●
Delay start up to 24 h/Time left display/Time-of-day indicator	●/●/-	-/-/-	●/●/●
Drum lighting	Bulb	Bulb	●
Display language selection	-	-	●
<b>Efficiency and sustainability</b>			
EU Energy/Condensation efficiency classification	B/A	B/A	B/A
Energy consumption per load in kWh*	3.9	3.9	3.35
Noise level during standard programme in db(A) re 1 pW	63	63	67
Duration of standard programme in min	111	111	94
EcoFeedback function	-	-	-
ProfiEco motor	-	-	-
Heat exchanger	●	●	●
<b>Main drying programmes</b>			
Automatic plus/Basket/Demin/Sportswear/Cotton hygiene	●/-/●/-/-	●/-/-/-/-	●/-/●/●/●
Express/Warm air/Cool air	●/●/●	-/●/●	●/●/●
Cottons/Minimum iron/Delicates	●/●/●	●/●/-	●/●/●
Shirts/Finish silks/Finish woollens	-/-/●	-/-/●	●/●/●
Steam smoothing/Gentle smoothing	-/●	-/-	-/●
Smoothing	-	●	-
Outdoor/Proofing/Standard pillows	-/-/-	-/-/-	●/●/●
Mixed load/Favourites	-/-	-/-	-/●
<b>Main drying options</b>			
Low temperature/Gentle tumble	●/-	●/-	●/-
Freshen up/auto-load control	-/-	-/-	-/-
Anti-crease action/Audible signal	●/●	●/●	●/●
<b>Quality</b>			
Soft ribs/Enamelled front	●/●	●/●	●/-
High-quality 3-component seals	-	-	-
<b>Safety</b>			
Child-safety feature/PIN code	-/-	-/-	-/-
"Empty container" indicator/"Clean filters" indicator	●/●	●/●	●/●
<b>Technical data</b>			
Appliance dimensions in mm (W x H x D)	595 x 850 x 634	595 x 850 x 587	595 x 820 x 575
Weight/door open depth	52 kg/1074 mm	51 kg/1060 mm	54kg/1150 mm
Stacking kit/Stacked height	WTV412/170mm	WTV412/170 mm	WTV410/169 mm
Stacking kit with worktop/Stacked height	WTV414/173 mm	WTV406/170mm	-
Matching Model	W 1914	W3370 Edit. 111/W3164 Edit. 111	W 2859i WPM

\* Cottons 6kg or 7kg, according to EN 61121 with 60% residual moisture (depending on model)





### **Washer-dryer stack**

If there is not sufficient space available to install two appliances next to one another, most Miele washing machines and tumble dryers can be conveniently combined as a washer-dryer stack. In this arrangement, the washing machine is always installed under the tumble dryer. Miele offers various stacking kits for a stable connection between the two appliances. Some, e.g. the WTV 511 model, feature a practical drawer. This drawer is ideal for storing accessories for example or for conveniently resting the laundry basket on whilst loading and unloading the tumble dryer.

# Accessories for laundry care appliances



**Washer-dryer stacking kit  
WTV 406**

For the safe installation of a washer-dryer stack, with worktop

- Integrated worktop with push/pull function
- Washing machines with slanted fascia: W 3000
- Combination with tumble dryer: T 8000
- Colour: Lotus White

\$1,700



**Washer-dryer stacking kit  
WTV 410**

For the safe installation of a washer-dryer stack, with worktop.

- Integrated worktop with push/pull function
- For integrated washing machines: W 2000i
- For integrated tumble dryers: T 4000Ci
- Color: Stainless Steel

\$1,700

Front trim stainless steel for WTV 410

\$1,700



**Washer-dryer stacking kit  
WTV 412**

For a space-saving and safe installation of a washer-dryer stack

- All rounder for washing machines with any type of fascia panel incline
- Washing machines: W 1000, W 3000
- Combination with tumble dryer: T 7000, T 8000
- Colour: Lotus White

\$1,000



**Washer-dryer stacking kit  
WTV 414**

For the safe installation of a washer-dryer stack, with worktop

- Integrated worktop with push/pull function and accessory compartment
- Washing machines: W 1000
- Combination with tumble dryer: T 7000
- Colour: Lotus White

\$1,700

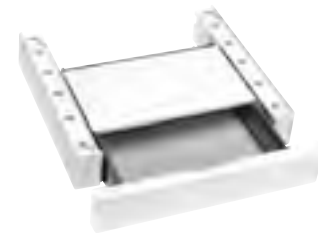


**Washer-dryer stacking kit  
WTV 501**

For a space-saving and safe installation of a washer-dryer stack

- Space-saving WTV stacking kit height of 2.5 cm
- Suitable for all W1 washing machine models
- Combination with T1 tumble dryers from the ChromeEdition range
- Colour: Lotus White

\$1,000



**Washer-dryer stacking kit  
WTV 511**

For the safe installation of a washer-dryer stack with drawer and worktop

- Plenty of storage space thanks to integrated drawer with push/pull function
- Suitable for all W1 washing machine models
- Combination with T1 tumble dryers from the ChromeEdition range
- Colour: Lotus White

\$3,000

## Combination options for washer-dryer stack

		Tumble dryers		
		T1 Chrome Edition	T 8000	T 7000
Washing machines	W1 Chrome Edition	WTV 511 WTV 501	WTV 412	WTV 414 WTV 412
	W 3000 straight fascia	WTV 511 WTV 501	WTV 406 WTV 412	WTV 412
	W 1000	WTV 511	WTV 412	WTV 414 WTV 412





Miele

ULTRACLEAN

5000

00:00

00:00

00:00

00:00

00:00

00:00

00:00

00:00

00:00

00:00

00:00

00:00

00:00

00:00

00:00

00:00

00:00

00:00

00:00

00:00

00:00

00:00

00:00

00:00

00:00

00:00

00:00

00:00

00:00

00:00

00:00

00:00

00:00

00:00

00:00

00:00

00:00

00:00

00:00

00:00

00:00

00:00

00:00

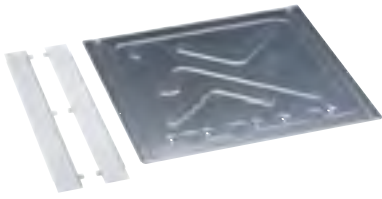
00:00

00:00

00:00

00:00

# Accessories for laundry care appliances



## UBS W/T/G building-under kit

For the safe building under of washing machines, tumble dryers and washer-dryers with a straight fascia panel.

- Building under low worktops (from 82 cm) - replaces appliance lid
- For washing machines: W 3000
- For tumble dryers: T 8000
- For washer-dryers: WT 2000

\$800

## Building-under kit UBS W1/G (not illustrated)

For the safe building under of W1 washing machines

- Building under low worktops (from 82 cm) - replaces appliance lid
- For washing machines from the ChromeEdition range with straight fascia

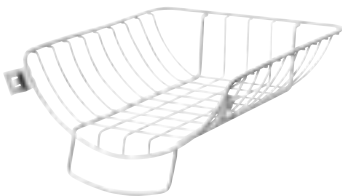
\$800

## Building-under kit UBS T1/G (not illustrated)

For the safe building under of T1 tumble dryers

- Building under low worktops (from 82 cm) - replaces appliance lid
- For tumble dryers from the ChromeEdition range with straight fascia

\$800



## Tumble dryer basket TK 111

Ideal for trainers, childrens' boots, small woollen textiles or cuddly toys

- Best care for delicate textiles
- Specifically developed for Miele tumble dryers
- For: T 8000, T 7000

\$1,000



## Dryer basket TKR 555

Ideal for trainers, childrens' boots, small woollen textiles or cuddly toys

- Best care for delicate textiles
- Fine brush attachment raises the textile's pile
- Suitable for all T1 tumble dryers

\$1,000



## Brush for condenser dryer

Long stem brush to clean heat exchange of Tumble Dryers for T8812C and T7944C.

\$140

washing machines . tumble dryers . washer dryer





## washer dryer

Miele washer-dryers combine the functions of a washing machine and a tumble dryer in one single unit. This allows you to wash and then dry 3 kg of laundry without having to transfer the laundry to a second machine. And if time is of the essence, laundry can be washed and dried in 90 minutes. This is perfect laundry care on the smallest of footprints.



# Miele washer dryer highlights

**Exclusive to Miele** **Patented<sup>1)</sup> uniqueness**  
Miele's unique honeycomb drum with hexagonal sections allows laundry to glide gently on a thin film of water. This protects fabrics, improves the removal of creases and produces more uniform drying results.



## Express

For those who lead a busy life: lightly soiled textiles washed and dried in only 90 minutes in the "Express" programme.



## Sensor-controlled drying

Excellent drying results: thanks to direct moisture sensing and intelligent electronics.



## Thermo spin

Cut costs with Miele: the special combination of hot air and tumbling action before the drying cycle saves time and electricity.



**Exclusive to Miele** **Rinse out fluff – patented<sup>2)</sup>**  
No discolouration of textiles through fluff: fluff created during the drying cycle is thoroughly rinsed out of the appliance.



**Exclusive to Miele** **"Stains" option**  
Every stain is different: that is why Miele wash programmes can be adjusted precisely to treat different types of stains.

Features will vary depending on model

<sup>1)</sup>European patent EP 0 935 687 B1

<sup>2)</sup>German patent DE 197 42 282 C1



# Further Miele washer dryer benefits



## Washing at low temperatures

Measurable energy savings: even at 20°C or in the "Cold" wash programme, immaculate standard of cleanliness can be achieved for lightly soiled laundry.



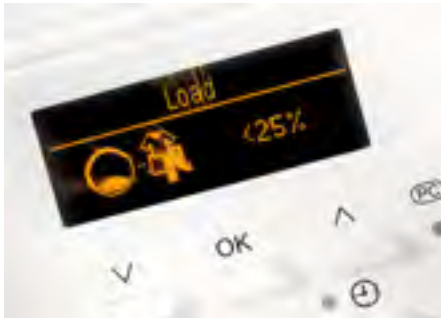
## Exclusive to Miele AutoClean - patented<sup>1)</sup>

No residue in the detergent dispenser: after every wash programme, powerful jets of water ensure the dispenser is clean.



## Extra quiet

Pleasant: a special wash rhythm, "Rinse hold" and "No final spin" guarantee a particularly quiet programme cycle.



## Load indicator and dispensing recommendation

Load quantity is decisive: preventing overloading and dispensing the correct amount of detergent – very simple with a Miele.



## Drum lighting

Enlightening: you cannot overlook a piece of laundry in the perfectly illuminated honeycomb drum when unloading.



## Waterproof Metal System (WPM)

Protection against flooding: intelligent sensor technology and a metal-braided hose provides utmost safety.



## Stainless-steel suds container

Excellent durability: high-class materials and a special design guarantee excellent quality.



## Exclusive to Miele Enamelled front

As good as it looks: the enamelled front is scratch-proof, corrosion-proof, and easy to clean.



Miele

SOFTTrend®  
WT2760  
Waterproof-Metal

Control panel of the Miele SoftTrend WT2760 dishwasher, featuring a digital display and various buttons for cycle selection and settings.

Start/Pause	OK	Cancel	Delay Start	Auto Program	Stop	Signal	Unlatch
Start/Pause	OK	Cancel	Delay Start	Auto Program	Stop	Signal	Unlatch
Start/Pause	OK	Cancel	Delay Start	Auto Program	Stop	Signal	Unlatch
Start/Pause	OK	Cancel	Delay Start	Auto Program	Stop	Signal	Unlatch

# The perfect washer dryer for you

## Product overview



### WT 2780 WPM

- Honeycomb drum
- 5.5kg washing/ 3kg drying
- 1600 rpm/ Clear text LCD
- Load size & detergent advice/ Stains
- Special wash & dry programme: Pillows, Hygiene, Soft toys, Trainers, First wash
- Wash programme: Curtains
- Dry programme: Freshen up,
- Rinse out fluff
- Dry option: Low temperature

\$22,980



### WT 2789i WPM

- Honeycomb drum/ 5.5kg washing/ 3kg drying
- 1600 rpm/ Clear text LCD
- Load size & detergent advice/ Stains
- Optional stainless steel front panel
- Special wash & dry programme: Pillows, Hygiene, Soft toys, Trainers, First wash
- Wash: Curtains/ Dry: Freshen up,
- Rinse out fluff, Low temperature option

\$37,000



### Front panels W/T/FV 60

From stainless steel for elegant integration into living environment

- Height: 596 mm
- For integrated W 2000i washing machines, T 4000 Ci tumble dryers and WT 2000i washer-dryers

\$3,000

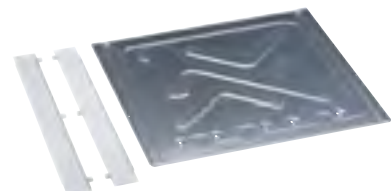


### Front panels W/T/FV 64

From stainless steel for elegant integration into living environment

- Height: 636 mm
- For integrated W 2000i washing machines, T 4000 Ci tumble dryers and WT 2000i washer-dryers
- Not suitable for stacked tumble dryers

\$3,250

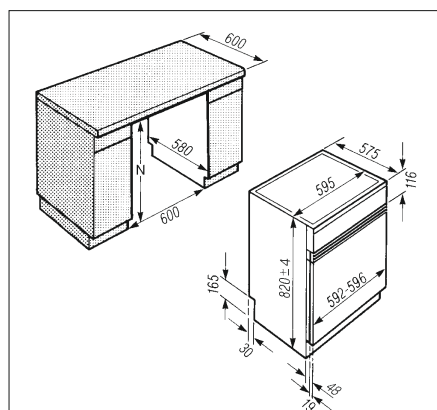


### UBS W/T/G building-under kit

For the safe building under of washing machines, tumble dryers and washer-dryers with a straight fascia panel.

- Building under low worktops (from 82 cm) - replaces appliance lid
- For washer-dryers: WT 2000

\$800





# Washer-dryers

## Product summary



Model/Sales designation	WT 2780 WPM	WT 2789 i WPM
Washing/Drying capacity in kg	5.5/3.0	5.5/3.0
<b>Installation</b>		
Can be slotted-under/built-under height	●/82 cm	-/82 cm
Door hinge side	right	right
<b>Washing machine with dryer function</b>		
Electronic residual moisture measurement during drying/Condenser dryer with water cooling	●/●	●/●
Thermo spin	●	●
<b>Spin</b>		
Max. spin speed/Residual moisture (%)	1,600/44	1,600/44
Rinse hold/"Without spin" function	●/●	●/●
<b>Design</b>		
Machine colour/Fascia colour	Lotus white/Lotus white	Stainless steel/Stainless steel
Fascia panel version	Straight	Straight
Operation	Illuminated rotary selector	Illuminated rotary selector
Display	3-line	3-line
<b>Gentle laundry care</b>		
Patented honeycomb drum	●	●
<b>User convenience</b>		
Delay start up to 24 h/Time left display/Time-of-day indicator	●/●/●	●/●/●
Drum lighting	LED	LED
Display language selection	●	●
AutoClean detergent dispenser	●	●
Load-size indicator and dispensing recommendation	●	●
Automatic fluff flushing	●	●
<b>Efficiency and sustainability</b>		
HK energy efficiency label	Grade 1	Grade 1
EU Energy efficiency classification/Wash performance classification	A+/A	A+/A
Total water consumption in standard programme after washing and drying in l/Energy consumption in kWh*	69/3.70	69/3.70
Programme duration (min) <sup>1</sup>	270	270
Programme duration (min) <sup>2</sup>	152	152
Low-temperature washing "Cold"/Automatic load control	●/●	●/●
<b>Main wash programmes</b>		
Cottons/Minimum iron/Delicates	●/●/●	●/●/●
Shirts/Silks/Woolens	●/●/●	●/●/●
Automatic plus/Express 20/Soft toys	●/●/●	●/●/●
Dark laundry/Denim/Hygiene	●/●/●	●/●/●
Pillows/Down filled items/Curtains	●/-/●	●/-/●
Outdoor/Proofing/New textiles	●/●/●	●/●/●
Sportswear/Trainers	●/●	●/●
<b>Main drying programmes</b>		
Cottons/Minimum iron/Delicates	●/●/●	●/●/●
Shirts/Silks/Woolens	●/●/●	●/●/●
Automatic plus/Express 20	●/●	●/●
Dark laundry/Denim/Hygiene	●/●/●	●/●/●
Outdoor/Proofing/New textiles	●/●/●	●/●/●
Sportswear/Trainers/Standard pillows	●/●/●	●/●/●
Smoothing/Freshen up	●/●	●/●
Cool air/Warm air	●/●	●/●
<b>Main wash options</b>		
Soak/Pre-wash/Water plus	●/●/●	●/●/●
Short/Extra quiet/Stains	●/●/●	●/●/●
<b>Main drying options</b>		
Low temperature	●	●
<b>Quality</b>		
Enamelled front	●	●
<b>Safety</b>		
Water Proof Metal	●	●
Child-safety feature/PIN code	●/●	●/●
<b>Technical data</b>		
Appliance dimensions in mm (W x H x D)	595 x 850 x 595	595 x 820 x 575
Weight/door open depth	101 kg/975 mm	100 kg/975 mm

<sup>1</sup>Washing 5.5 kg & drying 2 x 2.75 kg according to EN 50229

<sup>2</sup>Washing 3.0 kg & drying 1 x 3.0 kg



washing machines . tumble dryers . washer dryer .



## CareCollection

Miele detergents and care products for thorough cleaning, gentle care and perfect drying results.

. CareCollection . steam ironing system . rotary ironer . professional laundry care





# For optimum wash results

## Miele CareCollection for Miele washing machines

### **Simply perfect laundry care. With products from the Miele CareCollection.**

Only three Miele detergents are required for your daily laundry.

- For all white textiles:  
UltraWhite, the multi-purpose detergent.
- For coloureds and black garments:  
UltraColor colour-care detergent.
- For wool, silks and delicates:  
WoolCare for delicates.

Miele offers simple and compact solutions for special or high-quality loads which are only washed infrequently, such as down-filled items or textiles with breathable membranes. For thorough cleaning and gentle treatment of challenging fibres.

For Miele washing machines with automatic dispensing Miele also offers specific solutions: Miele UltraPhase 1 and Miele UltraPhase 2, a unique 2-component detergent system in cartridge form for whites and coloureds.

### **Optimum interaction of detergent and washing machine: perfectly cleaned laundry using minimum quantities of detergent.**

The products are specifically formulated for Miele washing machines and stand for perfect wash results.

Based on the water quantity and the temperatures required for Miele wash and care programmes, the most efficient dispensing recommendations for achieving perfect results have been determined and successfully tested.

This allows you to tap the potential of your Miele machines to the full using incredibly low quantities of detergents. This also protects the environment.



UltraWhite multi-purpose detergent for spotlessly white laundry.



UltraColor colour-care detergent for brilliant colours and protection against colours running.



WoolCare sensitive detergent for the gentle cleaning of delicate textiles.

# Miele CareCollection

For best washing and drying results



## UltraPhase 1 and 2 cartridges 1.5 l

- 2-component detergent for whites and coloureds.
- For brilliant colours and spotlessly white laundry
  - Excellent stain removal properties even at low temperatures
  - No overdosing thanks to automatic dispensing
  - Simply perfect laundry care with Miele.

UltraPhase 1 \$200

UltraPhase 2 \$200

### Ultra Phase 1 and 2:

Best liquid detergent system on the market. With TwinDos - automatic dispensing at the touch of a button for perfect wash results.



## 10-pack Caps Collection

### Caps – the perfect addition for special applications

Thanks to CapDosing best wash results for textiles requiring special treatment such as outdoor and hiking wear, silks and woollens.

The perfect addition for special applications. Mixed Caps box to give you the opportunity to familiarise yourself with the products.

- Detergent Caps: Sport, Down, Outdoor, WoolCare and SilkCare
- Care Caps: Fabric conditioners AQUA, NATURE and COCOON and Reproofing agent
- Additive Cap: Booster for persistent soiling
- No overdosing thanks to exact portions. For 10 wash loads.
- Simply perfect laundry care with Miele.

## 10-pack Caps Home

The perfect Cap mix for those household textiles which require special treatment.

- 3 WoolCare and 2 SilkCare Caps for all delicates
- 2 Down Caps for pillows or down-filled textiles
- 3 Booster Caps for persistent soiling

\$200

\$200



**10-pack Caps  
Outdoor +**

Everything you need for your outdoor wear.

- 8 Outdoor and 2 Reproofing Caps
- The Outdoor Cap cleans and retains the brilliance of colours
- The Reproofing Cap for protection against water, wind and a dirt-repellent finish

\$300



**10-pack Caps  
WoolCare**

For wool and delicates.

- Special care factor based on wheat protein and with colour-protection formula
- Special ingredients for protection against felting
- Best wash results even at low temperatures.

\$150



**10-pack Caps  
Booster**

The solution for persistent stains.

- For brilliant wash results even at low temperatures
- Helps to fight persistent stains such as grease or fruit stains
- Suitable for white and coloured laundry

\$150



**10-pack Caps  
Sport**

Perfect for breathable sportswear.

- Unpleasant smells are neutralised thanks to odour absorber
- Cleans and retains the brilliance of colours
- Retains the shape of textiles. Also suitable for fleece.

\$200



**10-pack Caps  
Fabric conditioners**

Particularly good for terry towelling.

- For soft, bouncy laundry
- Fresh, natural fragrance

AQUA - Pure and thorough cleanliness with a fresh scent

\$100

COCOON - For a feeling of peace and harmony

\$100

NATURE - A floral aroma and a natural, well-balanced fragrance

\$100

# Miele CareCollection



## UltraWhite Powder detergent 1.8 kg

For optimum results on white textiles and dye-fast coloureds.

- Best results in temperature ranges: 20/30/40/60/95°C
- Radiant white laundry thanks to powerful formula with active oxygen
- Excellent stain removal properties even at low temperatures

\$310

## UltraColor Powder detergent 1.8 kg

Suitable for coloured and black garments

- Best wash results in temperature ranges: 20/30/40/60°C
- With colour-protection formula for brilliant colours
- Excellent stain removal properties even at low temperatures

\$310

## Sensitive skin Powder detergent 1.8 kg

For optimum results on white textiles and dye-fast coloureds.

- Best results in temperature ranges: 20/30/40/60/95°C
- High quality, sensitive laundry detergent with a mild fragrance, specially formulated for persons with sensitive skin
- Excellent stain removal properties even at low temperatures

\$330



## UltraColor Liquid detergent 2 l

For coloureds and black garments.

- Best wash results in temperature ranges: 20/30/40/60°C
- With colour-protection formula for brilliant colours
- Excellent stain removal properties even at low temperatures

\$240

## WoolCare Detergent for delicates 2 l

For wool, silks and delicates.

- Special care factor based on wheat protein and with colour-protection formula
- Special ingredients for protection against felting
- Best wash results in temperature ranges: 20/30/40/60°C

\$310

## Fabric conditioner 2 l

Particularly for items made from terry towelling.

- For soft, bouncy laundry
- Fresh, natural fragrance
- Prevents electrostatic charge in the tumble dryer

\$150





### Special detergent Sport 250 ml

Perfect for breathable sportswear

- Odour absorber neutralises unpleasant smells
- Cleans and retains the brilliance of colours
- Retains the shape of textiles. Also suitable for fleece.

\$200



### Special detergent Outdoor 250 ml

Perfect for high-quality hiking wear and textiles with functional membranes

- Cleans and retains the brilliance of colours
- With lanolin for special care of wicking membranes

\$200



### Special-purpose detergent Down 250 ml

Ideal for pillows, sleeping bags or high-quality down-filled textiles

- Retains elasticity of down
- Retains breathability of down-filled textiles
- Feathers do not stick together and remain fluffy

\$240



### Reproofing agent 250 ml

Ideal for sports and rainwear

- Reproofing to protect against water and wind, and to give a dirt-repellent finish
- Retains the breathability of garments

\$240



### Machine cleaner 250 g

For hygienic cleanliness in dishwashers and washing machines

- Removes grease, bacteria and unpleasant odours
- Effective and thorough cleaning thanks to special Miele formulation
- Guarantees perfect wash and/or rinse results
- Top care for many years of reliable service

\$150



### Fragrance flacons 12.5 ml

For 50 drying cycles

- For a fresh scent lasting for up to 4 weeks
- For bouncy as well as beautifully fragrant laundry
- Developed specifically for Miele by perfume specialists 'en Provence'

Mediterranean Fig - Reminiscent of a summer's day by the Mediterranean Sea

Oriental Amber - Brings together the sensual and mysterious smells the Orient

Wild Orchard - A zesty combination of wild flowers and citrus fruits

\$680 (a set of 3 flacons)

### Tumble dryers with perfume option

Thanks to FragranceDos soft and beautifully fragrant laundry – lasting for up to 4 weeks.



washing machines . tumble dryers . washer dryer .



## steam ironing system

Goodbye ironing stress.  
Hello FashionMaster!  
Is ironing not one of your favourite pastimes? We can relate to that. It was for this reason we developed an ironing system to make ironing your textiles simpler, faster and more uniformly than ever before.

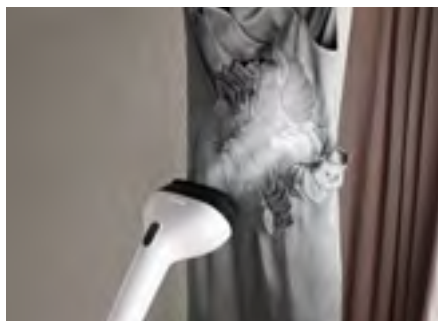
CareCollection . steam ironing system . rotary ironer . professional laundry care





# Miele steam ironing systems highlights

**Exclusive to Miele** **Honeycomb soleplate** It already ensures outstanding gentle treatment of laundry in washing machines and tumble dryers: the patented honeycomb drum. The same principle is now also applied to the FashionMaster, making a fine difference compared with other systems. The unique honeycomb soleplate<sup>1</sup> achieves best ironing results combined with perfect laundry care. Unlike conventional hand irons, the steam is distributed quickly and evenly along the channels between the hexagons across the entire soleplate. This creates a film of steam which allows the hand iron to glide effortlessly, but at the same time effectively, over the textile.



## 1-2-Lift-System

Two easy steps to set up, requiring no effort at all! Ready for use in next to no time thanks to the patented<sup>2</sup> 1-2 Lift-System.

## Infinite height adjustment

Simply ergonomic: the built-in gas pressure stay brings the ironing table to the perfect working height. (83 to 102 cm)

## Steam Jet

Multi talent: with the practical Steam Jet hanging clothes, jackets, curtains, etc. are gently ironed.

## Steam

More than merely blowing hot air: professional results thanks to 4 bar steam pressure and a consistent steam output of 100 g/minute.

## Non-stick soleplate

Perfect care: sequins, prints, delicate fabrics and dark items are all ironed without creating shiny patches.

<sup>1</sup>European patent EP 2 233 632 B1

<sup>2</sup>European patent EP 2 169 108 B1

# Further Miele steam ironing system benefits



## Suction function

Objective: steam penetrates the textiles effectively. Prevention of condensation, items do not slip.



## Inflation function

Virtually weightless: the air cushion allows the textile to be smoothed but not pressed.



## Active ironing table

Supporting: the memory function and automatic switch-on and switch-off simplifies the ironing process.



## Ironing multi-layered items

Saves physical strength and time: multilayered items can be ironed in a single process. Ironing both sides of a garment is no longer necessary!



## Water tank

Long-lasting: the water tank has a capacity of 1.25 l – sufficient for one full hour of ironing.



## Storage compartments

All-in-one: everything can be tidied away in storage compartments for hand iron and accessories.



## Rollers

Mobile and nimble: the FashionMaster can be transported effortlessly and follows you wherever you want to go.



## Comfort Zone

Ironing in a single process: the entire front of a shirt or blouse can be ironed without having to re-position the shoulder area.



**Exclusive to Miele**

## Automatic descaling

So simple: the descaling programme starts at the touch of a button and with the addition of a suitable descaling agent it runs completely automatically.

# The perfect steam ironing system for you

## Product overview



### Automatic rinsing

Unadulterated ironing fun: thanks to the rinsing function, the mineral residue left behind by the evaporation process is removed.



### Auto Off function

For peace of mind: when the hand iron or Steam Jet are not used for 15 minutes the entire appliance switches off.



### CoolDown function

Extra safety: when the hand iron is not in use it switches off automatically after three minutes.



### B 2826

- 100g/min constant steam/4 bar pressure
- External steam generator
- Honeycomb soleplate
- Additional non-stick soleplate
- Active ironing board
- Air cushion / suction function
- 1-2-lift system/ Height adjustment
- XL ironing board/ Auto cool down/Auto off

\$20,980

# FashionMaster

## Product summery



<b>Model/Sales designation</b>	<b>B 2826</b>
<b>Design</b>	
Iron colour	Anthracite/lotus white
Ironing board cover colour	Anthracite
<b>Perfect ironing results</b>	
Honeycomb soleplate	•
Steam pressure in bar	4.0
Steam quantity in g/min	100
Vertical steam	•
Steam starting from temperature level	2
Inflation function	•
Suction function	•
Second fan power level	•
<b>Time-saving ironing</b>	
Water container volume in l	1.25
Removable water container	•
Permanently refillable water container	•
Ironing multi-layered items	•
<b>User convenience</b>	
All-in-one	•
1-2 lift system	•
Infinitely variable height adjustment with gas pressure stay	830 – 1,020
Castors gentle on the floor	•
Ironing board with Comfort Zone	•
Premium ironing board cover	•
Automatic fan On/Off	•
Fan memory function	•
Automatic descaling	•
Automatic rinsing	•
Storage compartment for iron	•
Storage compartment for connection cable and accessories	•
<b>Safety</b>	
CoolDown function	•
Auto-Off function	•
<b>Technical data</b>	
Dimensions in mm (W x H x D)	470 x 970 x 1.480
Dimensions in mm (W x H x D)	470 x 1,280 x 370
Iron surface area in cm <sup>2</sup>	120 x 40
<b>Standard accessories</b>	
Non-stick soleplate	•
Steamer	–
Premium ironing board cover	•
Steam hose holder	•
Mains connection cable holder	•
<b>Optional extras available at additional charge</b>	
Steamer	•





# Accessories for laundry care appliances



## Steamer/SteamJet ST 10

For Miele's FashionMaster

- Effortless smoothing of hanging textiles such as jackets
- Fine brush attachment raises the textile's pile

\$1,980



## Descaling tablets 6 tablets

For the Fashion Master, to prevent dangerous scaling

- Thorough removal of deposits and limescale
- Descaling is highly effective and gentle on materials at the same time
- Safe to use thanks to specially designed formula
- No chemical deposits after descaling
- Top care for many years of reliable service

\$210



## Premium ironing table cover

For Miele's FashionMaster

- Ironing table cover and base
- Perfect absorption of moisture
- Washable up to 40°C
- Extremely hard-wearing and heat-resistant

\$1,450

washing machines . tumble dryers . washer dryer .



## rotary ironer

Convincingly versatile  
Households generate a wide variety of textiles and laundry items. Miele's rotary ironers offer a convenient solution for smoothing items quickly and effortlessly. See for yourself how versatile and easy it is to operate.

CareCollection . steam ironing system . rotary ironer . professional laundry care





# Miele rotary ironer highlights

## Miele rotary ironers - the champions against creases and wrinkles

Do you think that rotary ironers are old fashioned and inconvenient? If this is the case, then you have never worked with a rotary ironer from Miele. It will not take long for the benefits to convince you otherwise. Ironing has never been faster or more convenient! Compared to conventional ironing methods, you can save considerable effort and reduce ironing time by up to 50%. This allows you to gain time for the nicer things in life!



## Fascinatingly versatile

Flexible to meet all requirements: any type and size of laundry can be smoothed quickly and easily.

**Exclusive to Miele**

## Steam function

Powerful against creasing: twin-tank technology for fast and even steam distribution and excellent ironing results.

## High contact pressure

More pressure, better removal of creases: you would have to press down on the ironing board with a force of about 7 kg to create a comparable pressure with a hand iron.

## Temperature selection to suit textiles

Gentle treatment of fibres: simply select the temperature in accordance with the care label of the textile. This ensures that your textiles stay looking good for longer.

## Ironing sitting down

Ergonomic and strain reducing: the strain on your back is reduced, and operation using foot switches leaves both hands free.

# Further Miele rotary ironer benefits



## 83 cm wide roller

Convenient and time-saving: fast ironing of large laundry items such as pillow cases only requires one process.



## Variable roller speed

Ironing made simpler: the type of laundry, the residual moisture and your own pace of work are taken into consideration.



## Free roller end

No jams, no tangling: even difficult to iron laundry items such as skirts or shirts are easy to iron.



## Large laundry table

Spacious: your ironed laundry items land gently on the table – without creasing.



## Convenient airing bar

Saves space and time: simply place items over the bar after ironing. Ideal for cooling down and airing until dry.



## Automatic finger guard

Safe operation: in the event of fingers coming into contact with the finger guard, the motor stops and the heater plate lifts.



## Emergency release

Protects your laundry in any case: the contact pressure of the roller can be released by hand, and your laundry can be easily removed.



## Stability

Secure stand guaranteed: a robust construction and a supporting foot ensure a secure stand.



## Space-saving storage

Fits in the smallest niche: the appliance requires only 0.2 m<sup>2</sup> of storage space. It has four castors for ease of transportation.

# The perfect rotary ironer for you

## Product overview



### **B 995 D**

- 83 cm wide roller/ Free roller end
- Aluminium heater plate
- Steam function/ 0.84 l capacity water tank
- Three heater elements
- 5 choices of roller speed/ Laundry table
- Wide foot control bar/ Cover
- Auto finger guard/Emergency release
- Fold away for minimum storage space

\$19,980

# Rotary ironers

## Product summary



<b>Model/Sales designation</b>	<b>B 995 D</b>
<b>Design</b>	
Appliance colour	Lotus white
<b>Perfect ironing results</b>	
Temperature selection to suit textiles	•
High contact pressure (N/cm <sup>2</sup> )	0.35
Laundry feed board for easy laundry feed	•
Convenient infeed board with ample storage space	•
Airing bar for crease-free cooling	•
Steam function	•
Water tank capacity in l	0.84
Dual-tank technology	•
Uses tap water	•
<b>Time-saving ironing</b>	
Roller length in mm	830
Variable roller speed	•
Moisture-absorbing roller padding	•
<b>User convenience</b>	
Effortless ironing while seated possible	•
Free roller end	•
Clear control panel	•
Convenient folding mechanism	•
Easily manoeuvrable thanks to four castors	•
<b>Safety</b>	
Automatic finger guard	•
Emergency release	•
Good stability	•
<b>Technical data</b>	
Dimensions in mm (H x W x D)	959 x 985 x 380
Dimensions in mm (H x W x D) when folded	1,055 x 500 x 380
Total connected load in kW	3.0





washing machines . tumble dryers . washer dryer .



## professional laundry care

Washer-extractors and tumble dryers with load capacity of 6.5 kg represent ideally sized machines for many businesses, ensuring smooth and efficient processes and representing professional solutions to match a wide range of laundry-care challenges.

CareCollection . steam ironing system . rotary ironer . professional laundry care

# Commercial technology:

## Professional technology for various applications

### Professional features

Innovative and rugged commercial technology as well as application-specific programmes let commercial laundry machines stand apart from domestic appliances. Reinforced shock absorbers, smooth running properties thanks to a sturdy drum bearing and electronic imbalance monitoring in the spin cycle ensure durability and longevity in the extreme under even the harshest conditions. Very short programme cycles guarantee fast laundry turnaround. Commercial washer-extractors and tumble dryers are specialised in making light work of huge mountains of laundry, frequent washing and stubborn soils.

### Highly versatile

Washer-extractors and tumble dryers from Miele Professional place a clear focus on users and applications. With a broad range of standard and special programmes, the Professional portfolio is designed to meet wide-ranging needs.

### Short programme cycles

Connection to a hot water supply, a two-phase power supply, the large drum volume and a high heater rating enables short programme cycles, high throughput and extremely short turnaround times. Freshly laundered textiles are ready for use again in next to no time.









# Professional washer-extractor

## Product highlights

### Short programme cycles

Connection to hot water, a three-phase supply and a high heater rating enables short programme cycles, high throughput and extremely short turnaround times.



### Large capacity

The 59L large drum volume ensures uniform washing and drying results.



### Disinfection rinse

Optionally, a final rinse can be added to disinfection programmes to activate a high temperature and a holding time to meet the highest of hygiene requirements.



### Asynchronous motor

The extremely powerful asynchronous frequency-controlled motor facilitates a gentle speed ramp-up and quiet, smooth running during spinning to ensure maximum durability.



### Exclusive to Miele Unique care of fabrics

Gentle fabric care in Miele's patented honeycomb drum\* has been officially endorsed by the Institute for Applied Research in Krefeld, Germany (wfk).

\*European patent EP 0 935 687 B1







# Professional tumble dryers

## Product highlights

**Exclusive to Miele** **PerfectDry**  
The patented PerfectDry\*\* system constantly measures the moisture content of the laundry load to ensure that drying is terminated to give spot-on results.



### Large capacity

A 130L large drum volume ensures uniform washing and drying results and helps keep laundry inventory levels down.



### 2 separate motors

During drying, 2 separate motors ensure uniform drying results.



### Intelligent drum reversal

To ensure top-class drying results, the direction of drum rotation is reversed at defined intervals.



**Exclusive to Miele** **Perfect laundry finish**  
As on washer-extractors, the honeycomb drum\* on tumble dryers ensures optimum fabric care and a perfect laundry finish.

\*European patent EP 0 935 687 B1  
\*\*German patent: DE 197 19 661 C2

# Professional Laundry: Washer-extractors

## Product summary



Construction	PW 6065 Vario
Frontloader, door opening [Ø mm]	300
Robust spaceframe housing	•
Stainless steel front and sides	•
Stainless steel fascia and lid	•
Performance data	
Load capacity [kg]	6.5
Honeycomb drum, Drum volume [l]	59
Max. spin speed [max. rpm]	1,400
g factor	526
Residual moisture [%]	49
Drum lighting	•
Asynchronous motor with frequency convertor	•
Automatic load control	•
Controls/Programmes	
Profitronic L Vario	•
Delay start, max. 24 h	•
Sluice High/Low	•
Cottons Hygiene/Cotton Universal/Delicates	•/•/•
Minimum Iron/Quick Wash/Denim	•/•/•
Shirts/Silks/Woolens	•/•/•
Outdoor/Proofing/Curtains	o/o/o
Pillows/Kitchen Linen/Table Linen	o/o/o
Towelling	•
Disinfection programmes	o
Starch	•
Rinse	•
Spin & Drain	•
Water connections	
1 x cold water, ½" with ¾" threaded union	•
1 x hot water, ½" with ¾" threaded union	•
Drain pump	•
Electrical connection	
2N AC 400 V 50 Hz	•
Heating [kW]	5.3
Total rated load [kW]	5.5
Fuse rating [A]	2 x 16
Dispenser systems	
3-compartment front dispenser	•
AutoClean dispenser drawer	•
Dimensions/Weight	
External dimensions H x W x D [mm]	850/595/725
Weight [kg]	109
Installation as washer-dryer stack possible	•
Programme duration	CW <sup>1)</sup> HW <sup>2)</sup>
Cottons 60°C [mins.]	59 49
Price	HK \$55,000
Warranty* (standard)	5 years

• = standard, o = optional

<sup>1)</sup> CW = Cold water 15°C

<sup>2)</sup> HW = Hot water 70°C, data gathered in accordance with EN 60456

\* Not applicable for industrial use

# Professional Laundry: Tumble dryers

## Product summary



Construction	PT 7135 C Vario
Frontloader, door opening [ø mm]	440
Robust spaceframe housing	•
Stainless steel front and sides	•
Stainless steel fascia and lid	•
Performance data	
Load capacity [kg]	6.5
Honeycomb drum, Drum volume [l]	130
Drying system	Condenser
Electronic moisture monitoring	•
Condensate removed via drain hose	•
Drum lighting	•
Controls, Programmes	
Profitronic L Vario	•
Delay start, max. 24 h	•
Cottons/Minimum Iron/Woolens hand care	•/•/•
Shirts/Denim	•/•
Outdoor	•
Proofing	•
Smoothing	•
Cool air	•
Warm air	•
Towelling	•
Electrical connection	
2N AC 400 V 50 Hz	•
Heating [kW]	3.45
Total rated load [kW]	3.68
Fuse rating [A]	2 x 10
Dimensions/Weight	
External dimensions H/W/D [mm]	850/595/700
Weight [kg]	60.5
Installation as washer-dryer stack possible	•
Price	HK \$45,000
Warranty* (standard)	5 years

\* • = standard, o = optional

\* Not applicable for industrial use







# Ecological responsibility

## At the heart of everything we do

The responsibility for our environment has been a long tradition at Miele for more than 110 years. Our natural environment is the foundation of our existence which we want to protect, for us and generations to come to have a good future. True to our motto "Forever better", we develop domestic appliances for customers, which reduces the burden on the environment and natural resources. This begins with the selection of materials, ensuring efficient production and ends, after a long machine life, in environmentally friendly recycling.

Our environmental standards pay their way in the long run: Miele's highly efficient domestic and built-in appliances ensure excellent performance and set standards in terms of low water and electricity consumption values too.

This coral logo represents the sustainability of Miele products. The fascination for coral lies in the dimensions of coral systems: from large coral reefs measuring many square metres down to millimetre-sized tentacles. Sustainability is perceived to work similarly: from global responsibility to technical details which contribute to saving resources and reducing the burden on the environment.

More on our efforts in terms of sustainability on [www.miele-sustainability.com](http://www.miele-sustainability.com)





# Miele Home Programme

## Individual product advice in the comfort of your own home

Miele machines are of high quality and innovative – by purchasing Miele, you have opted for the best. To ensure pleasure and long-term satisfaction with your appliances and a multitude of functions, we would like to introduce you to an attractive offer: Miele's Home Programme. This service is tailored to suit your exact needs. You receive extensive advice on the functions and optimum use of your own Miele appliances in your own home.

Together we will programme your machines to suit your personal needs. We will explain specific features and give you advice on maintenance and operation. We also show you how you can achieve the best results and give you valuable tips to ensure long-lasting product pleasure.

### **Miele Service Certificate**

#### **Up to 10-year Miele extended warranty available**

Together we will programme your machines to suit your personal needs. We will explain specific features and give you advice on maintenance and operation. We also show you how you can achieve the best results and give you valuable tips to ensure long-lasting product pleasure.

#### **Exclusive Miele extended warranty for 5 or 10 years**

Miele is the only manufacturer to offer a comprehensive extended warranty for up to 10 years.

#### **Maximum safety**

During this extended warranty period, there will be no repair charges for faults, unless caused by wrongful intent or gross negligence.

#### **Highest degree of flexibility**

These extended warranties can be surrendered during the entire 2-year statutory warranty period.

#### **Reliable and fast**

In the event of repair, our highly-skilled service technicians will provide fast and reliable help.

Further information on these topics is available from our website ([www.miele.hk](http://www.miele.hk)).









## Exclusive Care

### Professional care, functional tests and repair cover

You have already made an excellent choice by buying Miele appliances with their legendary reputation for longevity. To give you total peace of mind for a very long time, Miele offers a special service: Exclusive Care. This service contract provides your appliances with professional maintenance checks by Miele service technicians. A diagnostic system, specially designed by Miele, is used to check your appliances and make sure they are kept up-to-date.

As well as making sure your appliances are in good working order, they will also be cleaned thoroughly using Miele care products. You will also be provided with some valuable advice on how to operate your Miele appliances. After carrying out Exclusive Care maintenance work, Miele offers a one-year repair cover.

#### **Miele in-house service**

##### **Your partner for prompt servicing**

When you buy a Miele appliance you choose longevity and the best in quality. If, however, you require any help, Miele Service can provide rapid and reliable assistance. The quality of Miele Service is regularly checked by customer surveys and is also confirmed by independent institutes.

Miele defines perfect service as more than simply providing expert service in the event of technical problems. Miele provides support right through from installing the machine to any matters concerning the use of appliances.

Further information on these topics is available from our website ([www.miele.hk](http://www.miele.hk)).

Expand your repertoire in homecare solutions with  
Miele's range of laundry care appliances.  
With seamless operation that perfectly integrates to your everyday life.  
Every Miele appliance is inspired by the love  
of home care - beautifully crafted and thoughtfully designed,  
allowing you to take care of any clothing care need.

**Miele (Hong Kong) Ltd**

41/F - 4101,  
Manhattan Place,  
23 Wang Tai Road,  
Kowloon Bay,  
Hong Kong

Tel: +852 2610 1331  
Fax: +852 3579 1404

[mielehk@miele.com.hk](mailto:mielehk@miele.com.hk)

[www.miele.hk](http://www.miele.hk)

**Miele Boutique**

Ground Floor  
111 Leighton Road  
Causeway Bay  
Hong Kong

Tel: +852 2890 1018  
Fax: +852 3579 1401

[boutique@miele.com.hk](mailto:boutique@miele.com.hk)

**Authorized Dealers**

Every effort has been made to ensure that the information given in this brochure is correct at the time of printing. However, due to continuous product improvement, Miele reserves the right to make changes to products and technical data without prior notice.

The images, logos, names and trading marks used in this brochure to identify Miele, our products and services are our proprietary marks whether registered or unregistered. These may only be used with the express permission of Miele.

Protecting the environment:  
This brochure is printed on paper  
bleached without the use of chlorine.

© Miele & Cie. KG, Gütersloh